

Lou Pontigo and Associates, Inc.

420 Osceola Avenue  
Jax. Beach Florida 32250  
Ph. 242-0908 Fax. 241-9557  
FL. CA # 8344 SC. CA# 3579

CONTACT US WITH YOUR COMMENTS  
COMMENTS @ LP-A.COM

6/16/2011 3:30:05 PM

REVISIONS	DATE

**FIELD ALTERATION**  
CONTRACTOR SHALL CONTACT LOU PONTIGO & ASSOCIATES PRIOR TO MAKING ANY STRUCTURAL FIELD MODIFICATIONS WHICH MAY VARY FROM THE INTENT OF THE ORIGINAL CONSTRUCTION DOCUMENTS. ANY FIELD ALTERATIONS MADE PRIOR TO BEING APPROVED BY LOU PONTIGO & ASSOCIATES MAY RESULT IN ADDITIONAL ENGINEERING OR INSPECTION FEES.

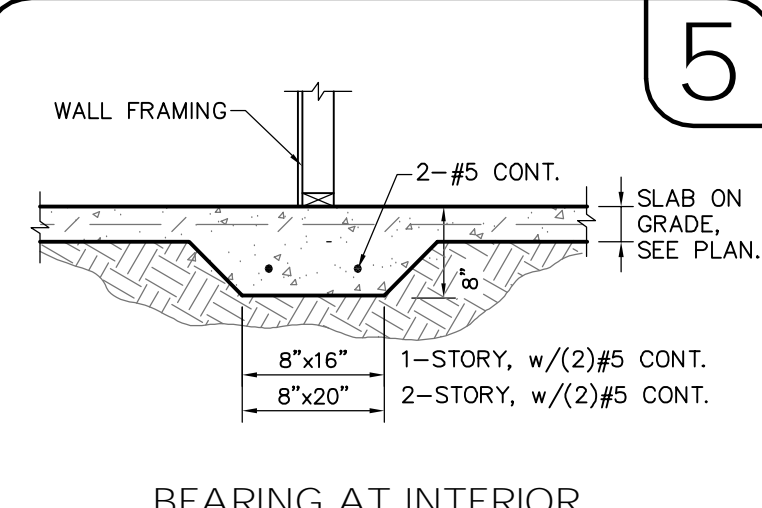
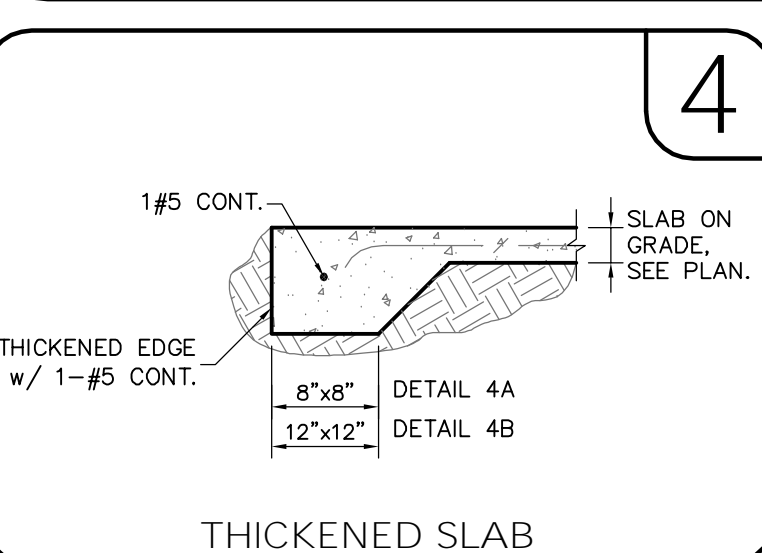
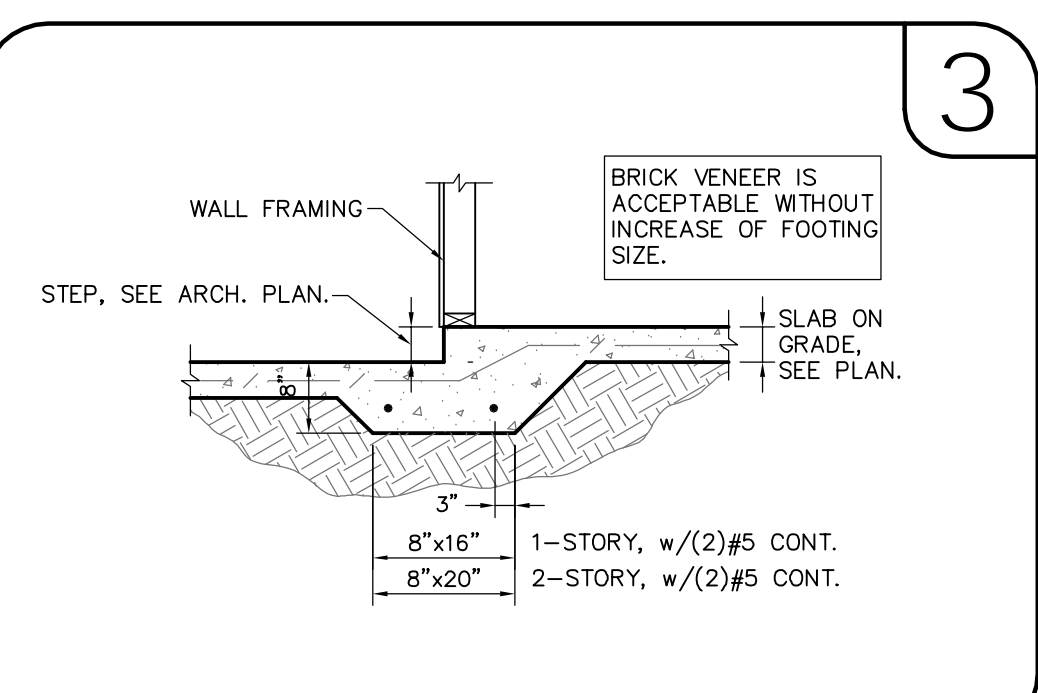
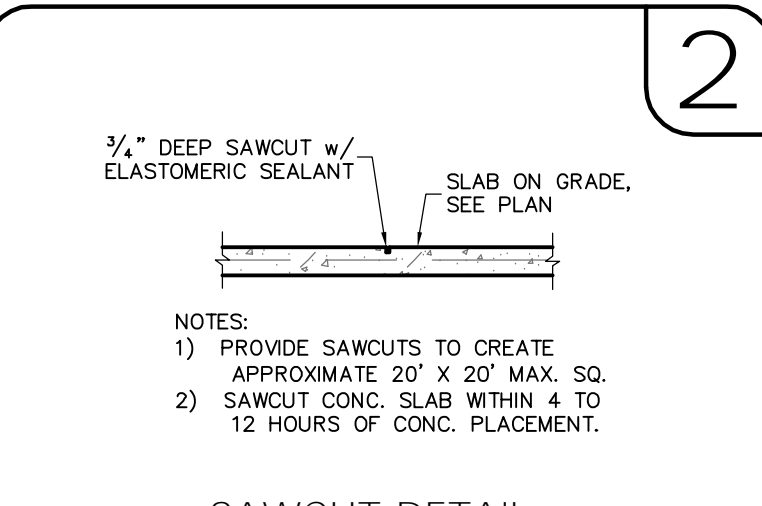
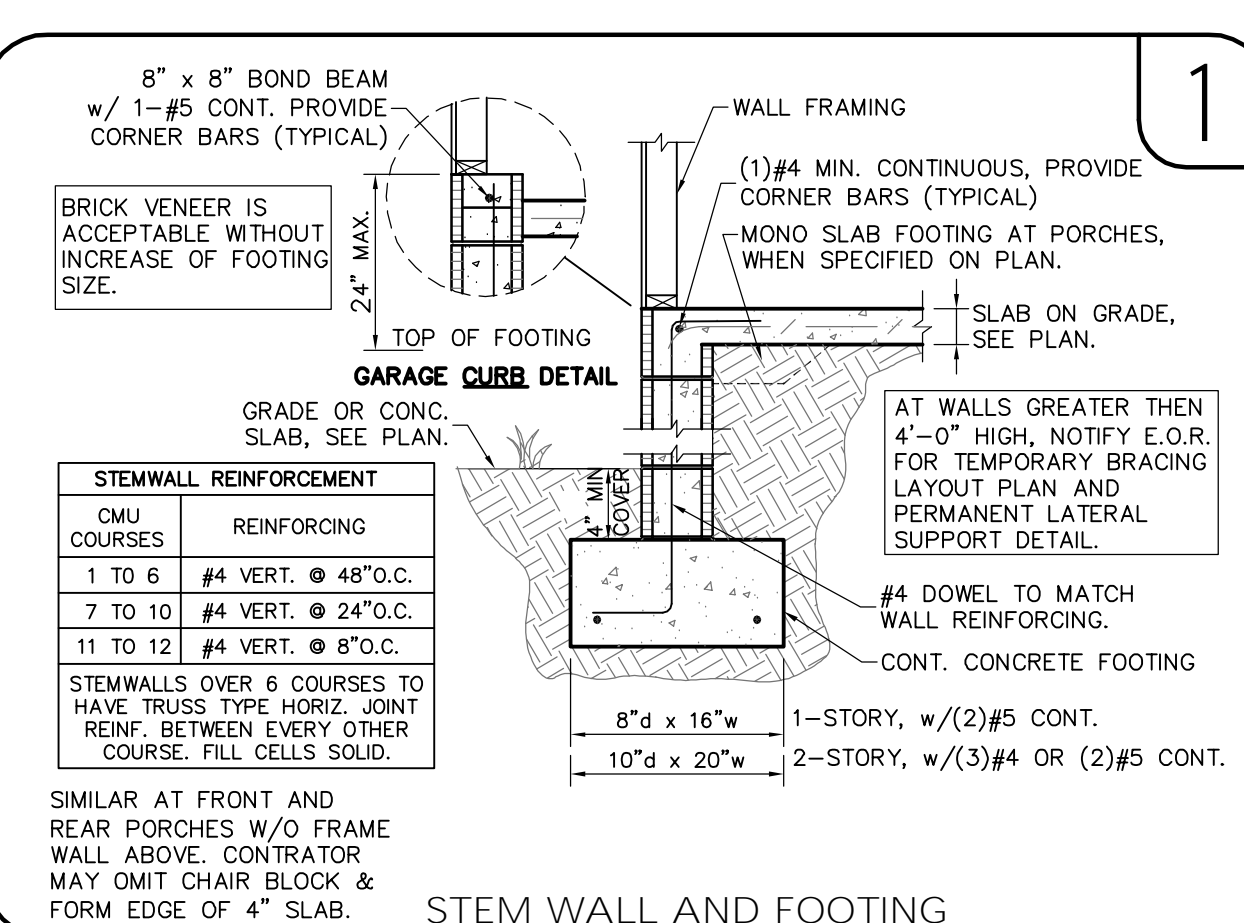
# DREAM BUILDERS 6 SANCTUARY

## STEMWALL FOUNDATION PLAN

DO NOT SCALE DIMENSIONS FROM THESE DRAWINGS. IF A DIMENSION IS UNCLEAR REFER TO THE ARCHITECTURAL DRAWINGS OR CONTACT THE E.O.R.

PLAN NAME	2347
DESIGN/DRAWN/CHECKED	CS / BMB / LAP
DATE	5.23.11
SCALE	AS NOTED
TRUSS I.D.	368534
LPA NO.	DRBD-11-00264
SHEET	S1.0

SHEET 2 OF 5



**SYMBOLS LEGEND**

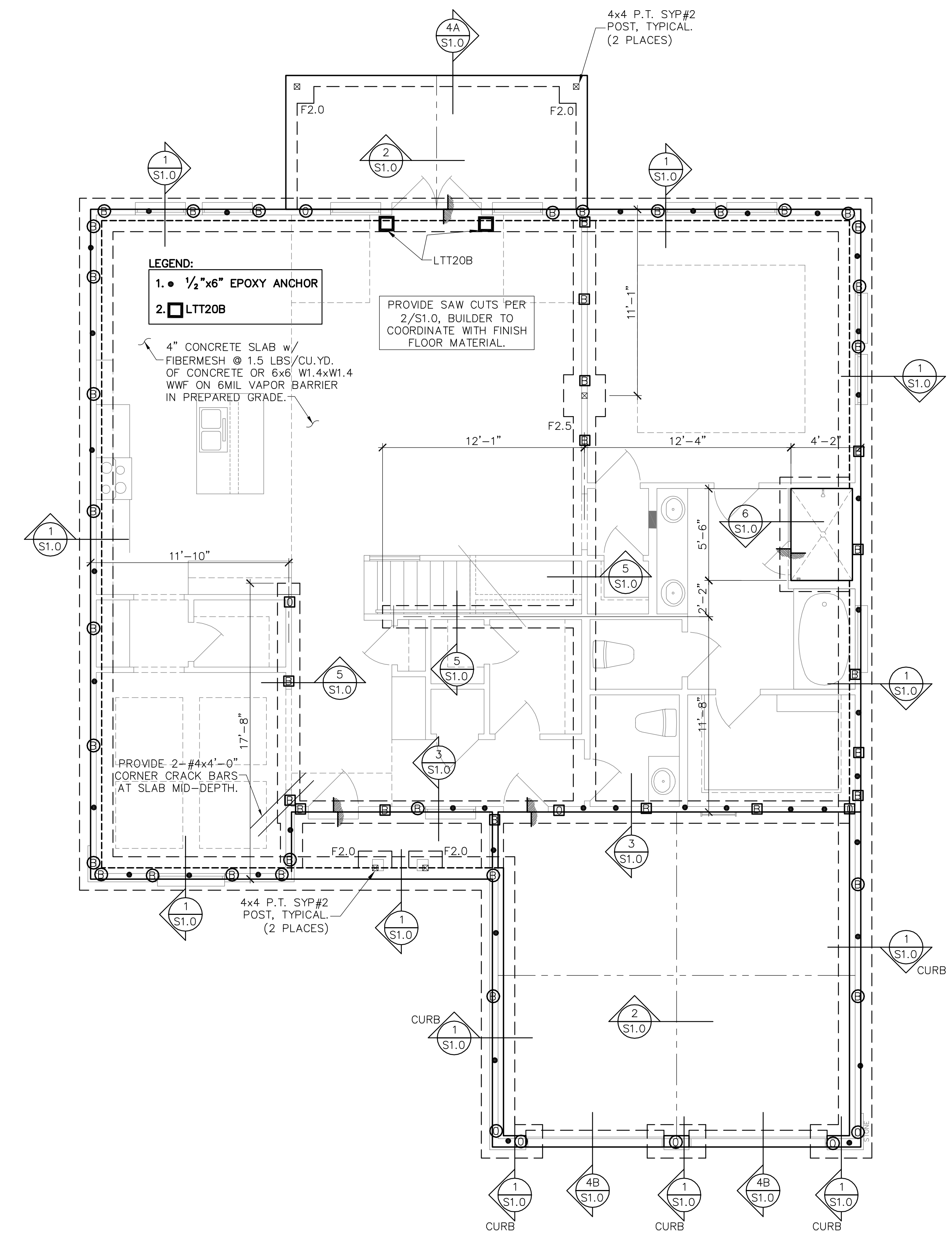
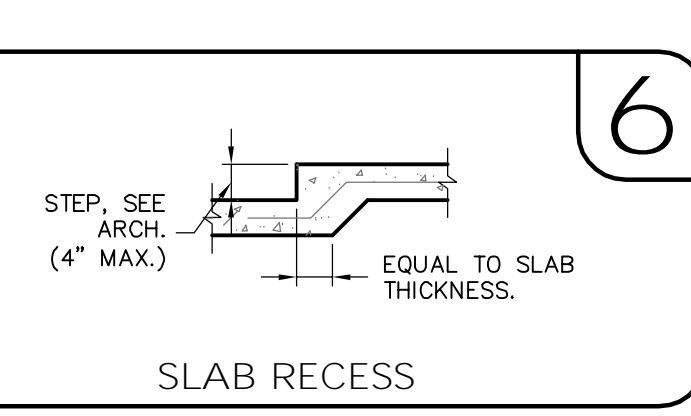
---	DESIGNATES FOOTING LINE
- - - -	DESIGNATES SAWCUT LINE
●	1/2"x6" EPOXY ANCHOR
▨	INTERIOR LOAD BEARING WALL
▧	DESIGNATES SLAB RECESS
---	BEAM OR TRUSS, SEE PLAN

**QUICK-TIE LEGEND**

⊙ SHARE DEFINES NUMBER OF STORES  
⊙ LETTER DEFINES DIAMETER OF Q.T. WIRE ROPE

SHAPES:  
○ ONE STORY QUICK TIE  
□ TWO STORY QUICK TIE  
△ THREE STORY QUICK TIE  
◇ FOUR STORY QUICK TIE

LETTER:  
B 3/8" ⌀ QUICK TIE  
G 1/2" ⌀ QUICK TIE  
O 5/8" ⌀ QUICK TIE  
R 3/4" ⌀ QUICK TIE



**FOOTING SCHEDULE AND NOTES**

TYPE	LENGTH	WIDTH	DEPTH	BOTTOM BARS
F2.0	2'-0"	2'-0"	1'-0"	3-#5 EA. WAY BOT.
F2.5	2'-6"	2'-6"	1'-0"	3-#5 EA. WAY BOT.
F3.0	3'-0"	3'-0"	1'-0"	3-#5 EA. WAY BOT.
F3.5	3'-6"	3'-6"	1'-0"	4-#5 EA. WAY BOT.
F4.0	4'-0"	4'-0"	1'-0"	4-#5 EA. WAY BOT.
F4.5	4'-6"	4'-6"	1'-0"	4-#5 EA. WAY BOT.

1. THIS FOUNDATION PLAN ONLY CONVEYS STRUCTURAL INFO. RELATED TO THE FOUNDATION. FOR GENERAL FEATURES, DIMENSIONS, CONDUITS, ELECTRICAL EMBEDS, STEP HEIGHTS, ECT., SEE ARCH. PLAN, ARCHITECTURAL PLAN SHOWN HERE IN FOR REFERENCE ONLY.  
2. FTGS. & FND. SHALL BE IN ACCORDANCE w/ LOCAL BUILDING CODES.  
3. SOIL COMPACTION AND FILL SHALL BE COMPACTED TO A MIN. OF 95% MODIFIED PROCTOR IN ACCORDANCE WITH ASTM D 1557.