

REVISIONS	DATE
△ STEM WALL FOUNDATION	07.24.12
△ MONO STEP	08.01.12
△ NEW STEM WALL	08.30.12

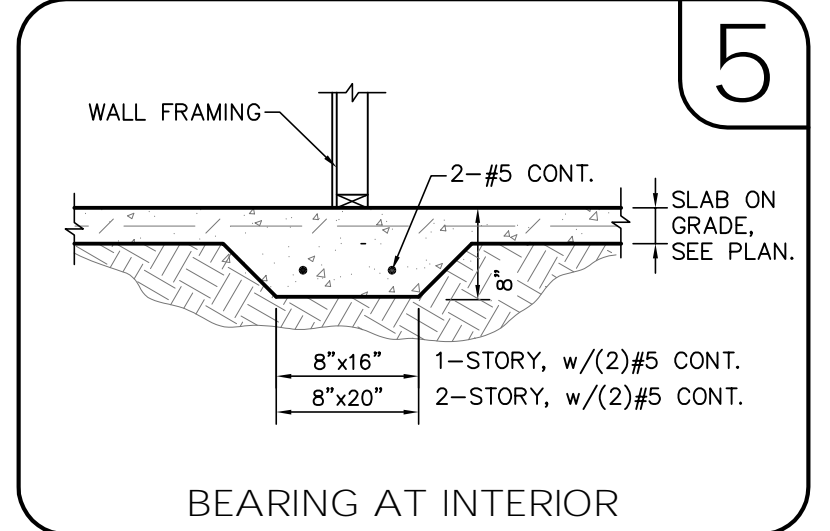
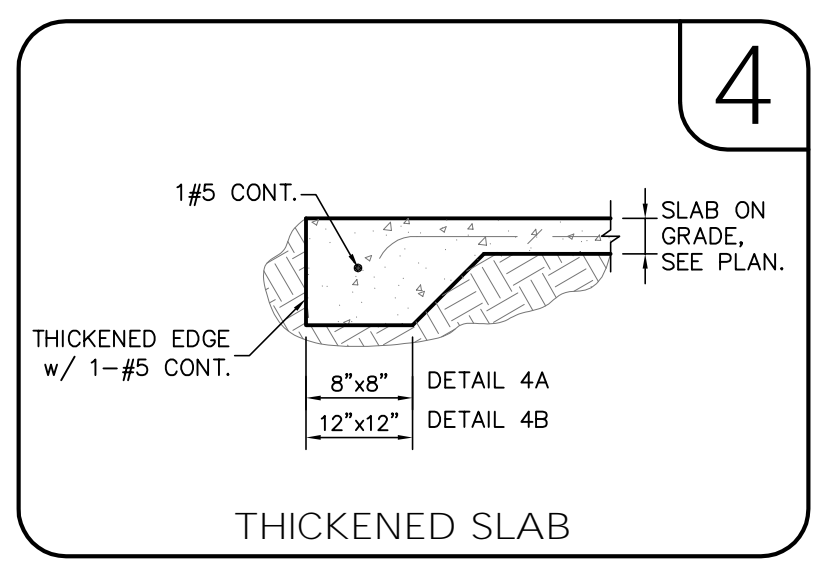
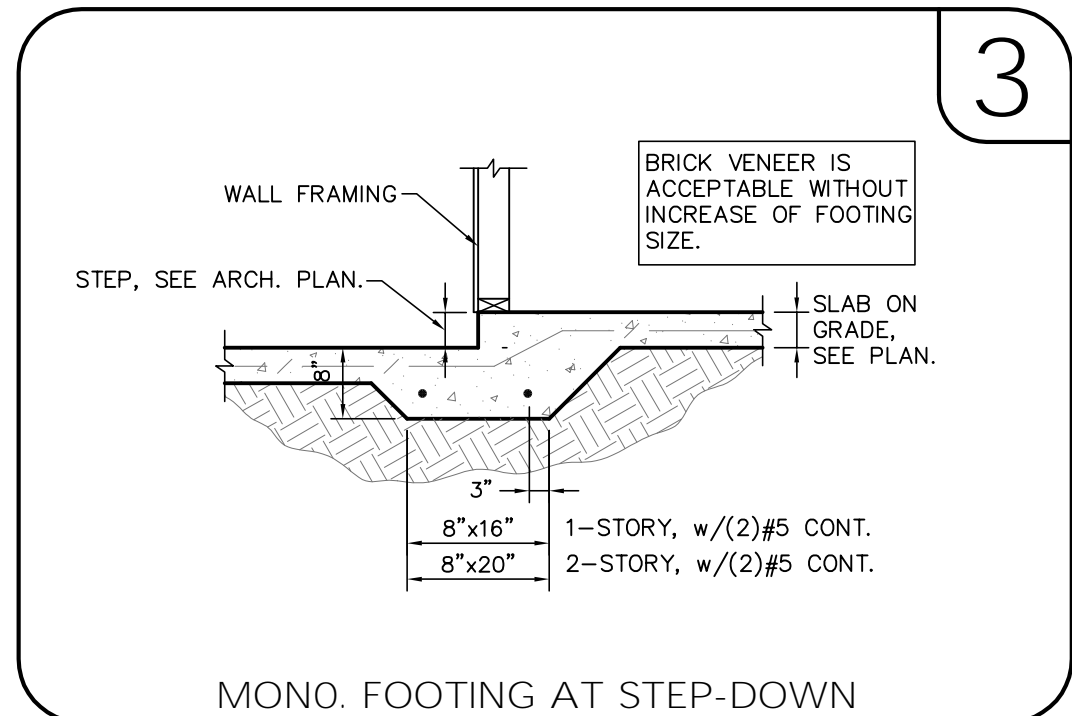
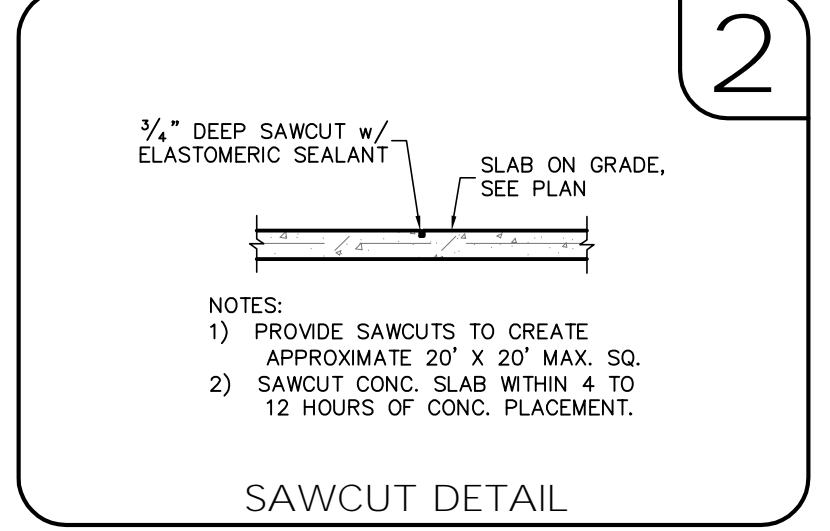
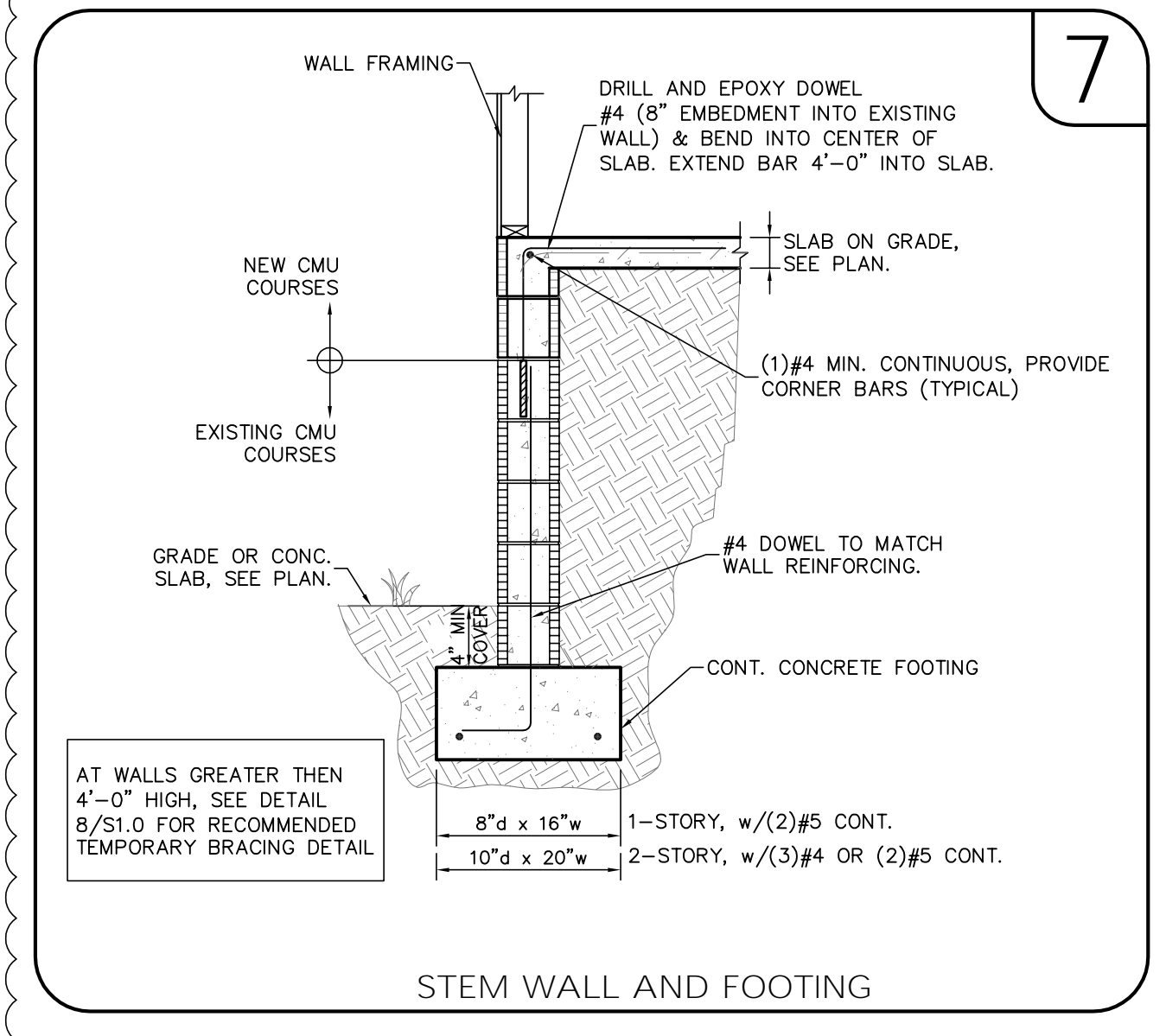
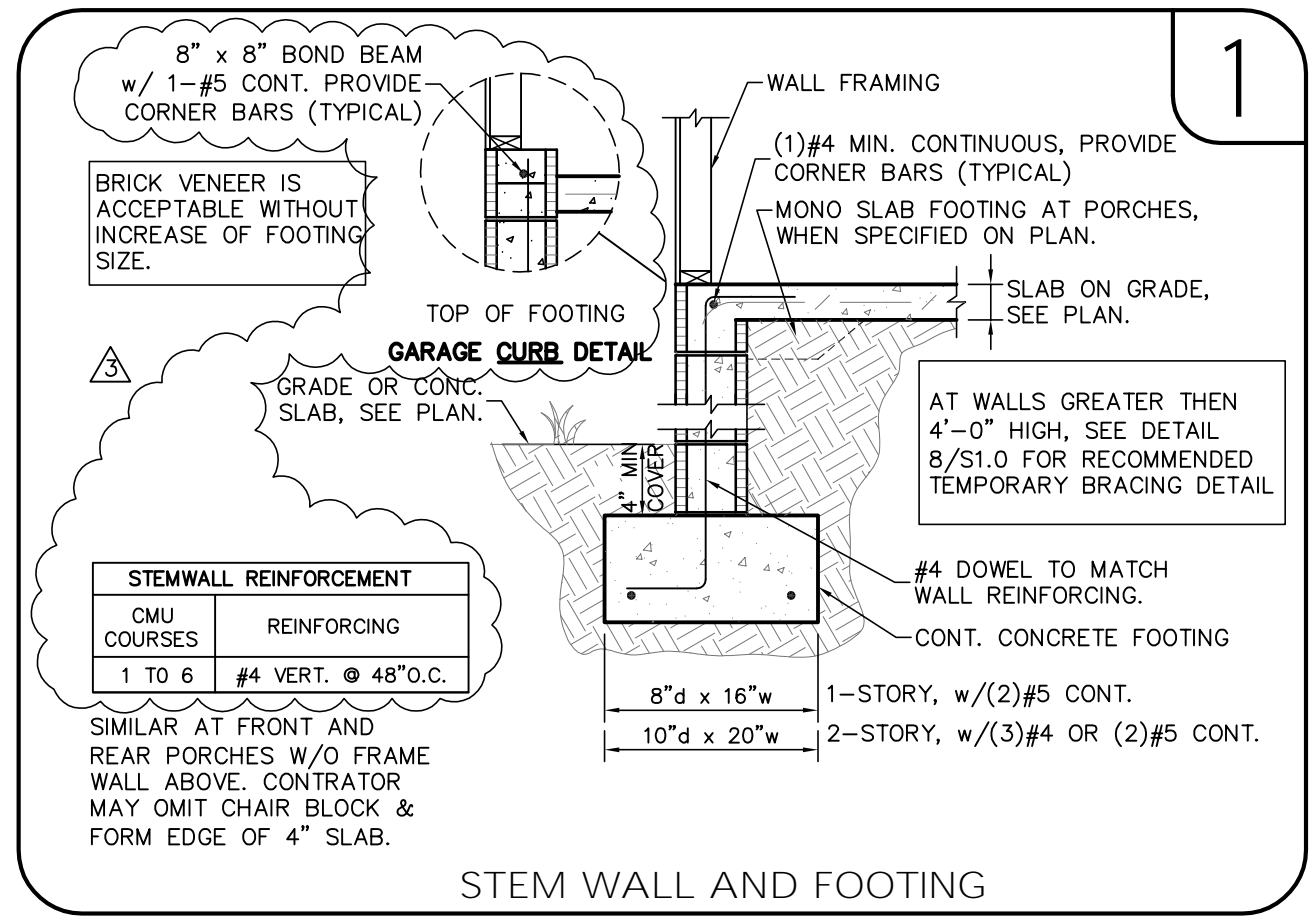
FIELD ALTERATION
 CONTRACTOR SHALL CONTACT LOU PONTIGO & ASSOCIATES PRIOR TO MAKING ANY STRUCTURAL FIELD MODIFICATIONS WHICH MAY VARY FROM THE INTENT OF THE ORIGINAL CONSTRUCTION DOCUMENTS. ANY FIELD ALTERATIONS MADE PRIOR TO BEING APPROVED BY LOU PONTIGO & ASSOCIATES MAY RESULT IN ADDITIONAL ENGINEERING OR INSPECTION FEES.

DREAMBUILDER HOMES
5208 COMMISSIONERS DR.

MONO FOUNDATION PLAN

DO NOT SCALE DIMENSIONS FROM THESE DRAWINGS. IF A DIMENSION IS UNCLEAR REFER TO THE ARCHITECTURAL DRAWINGS OR CONTACT THE E.O.R.

PLAN NAME
DESIGN/DRAWN/CHECKED CS / BMB / LAP
DATE 07.18.12
CONTROL NO.
TRUSS ID.
LPA NO. DRBD-12-00322
SHEET S1.0
SHEET 2 OF 6

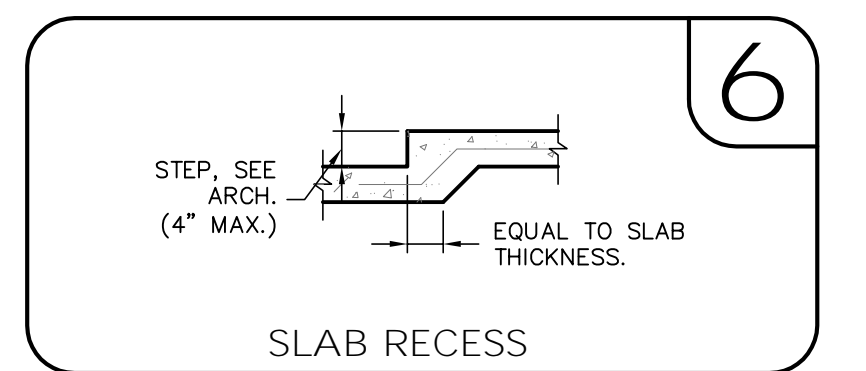
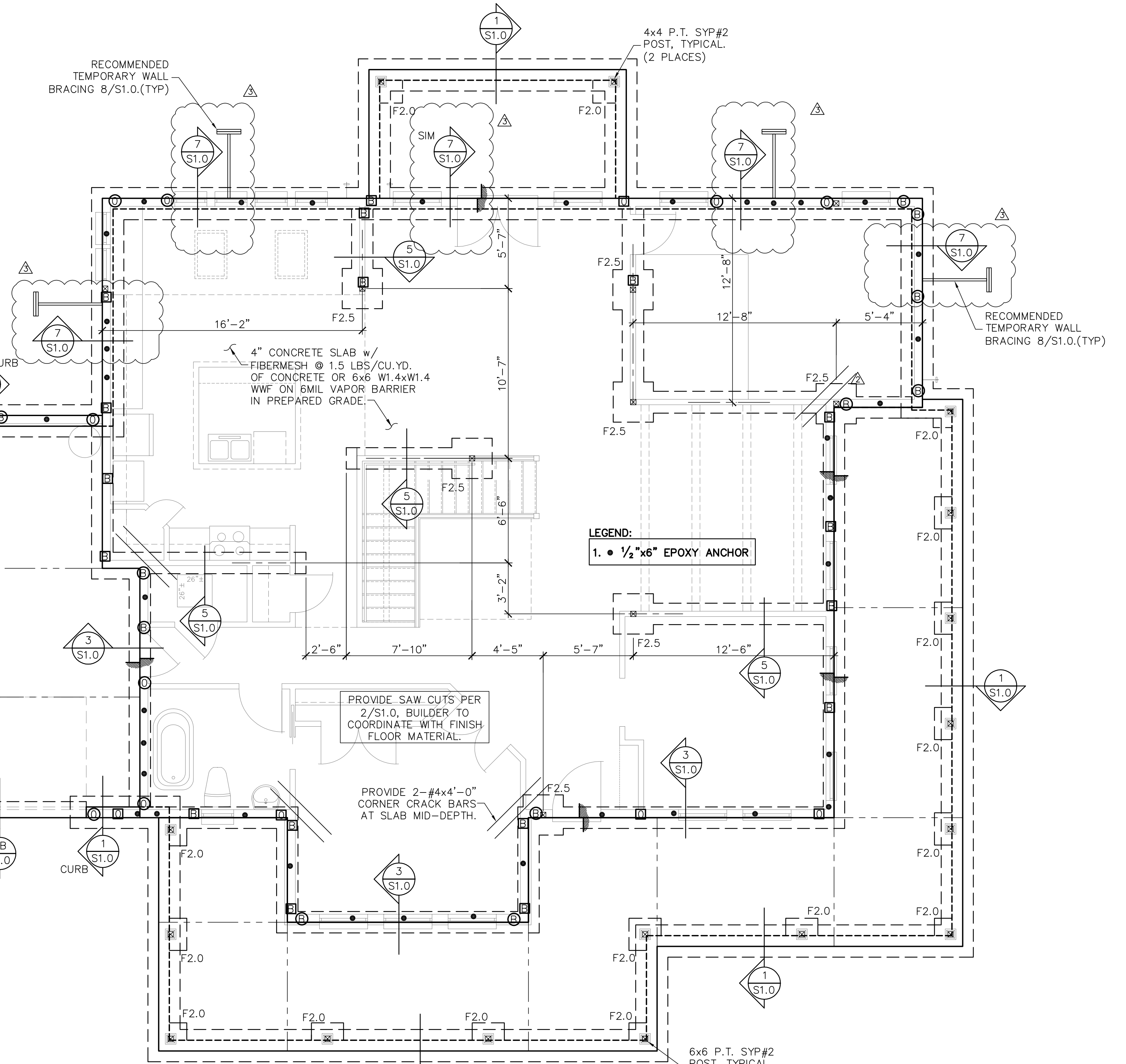
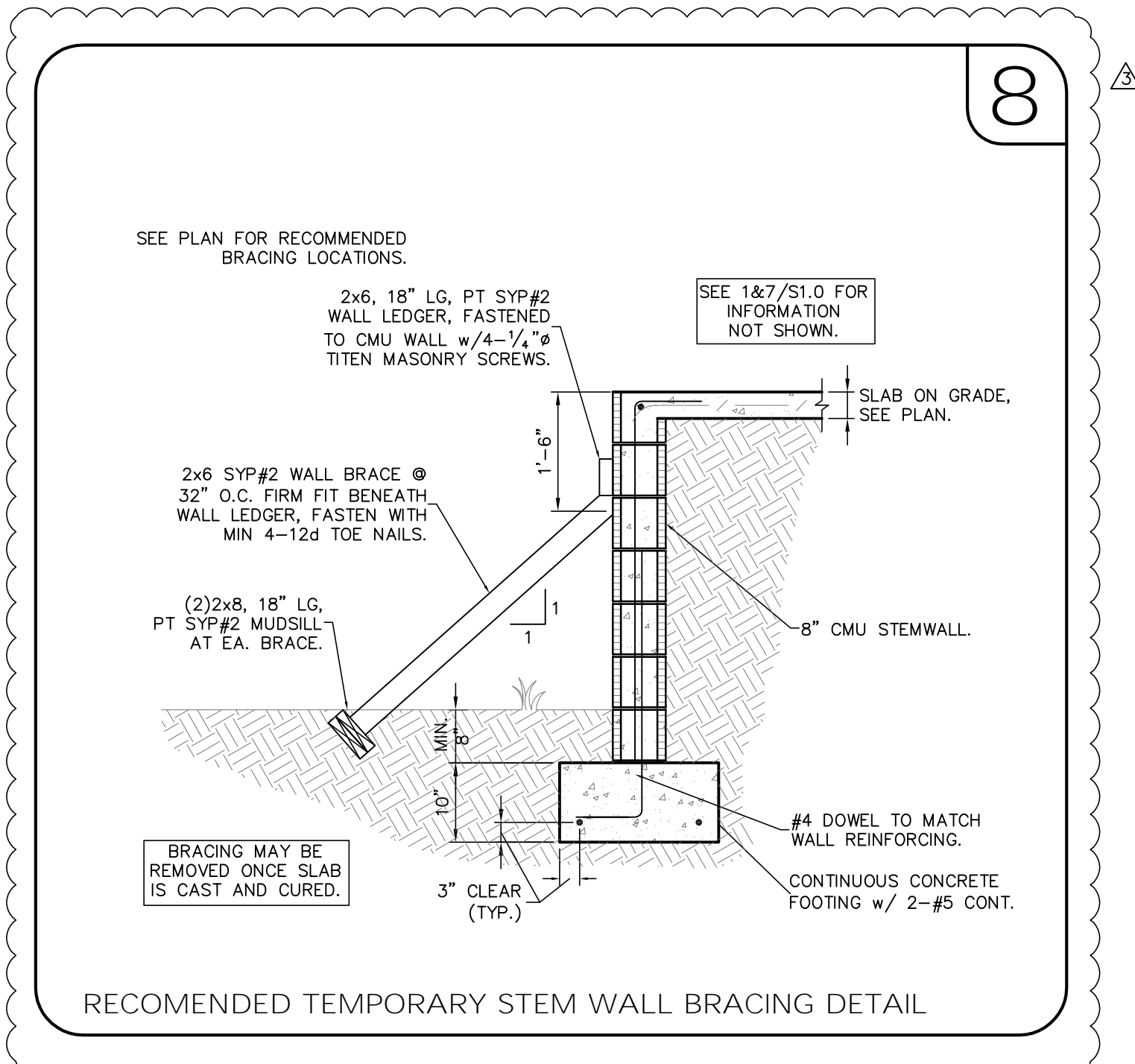


SYMBOLS LEGEND

---	DESIGNATES FOOTING LINE
- - -	DESIGNATES SAWCUT LINE
●	1/2" x 6" EPOXY ANCHOR
▨	INTERIOR LOAD BEARING WALL
▧	DESIGNATES SLAB RECESS
---	BEAM OR TRUSS, SEE PLAN

QUICK-TIE LEGEND

○	SHAPE DEFINES NUMBER OF STORIES
○	LETTER DEFINES DIAMETER OF Q.T. WIRE ROPE
○	SHAPES:
○	ONE STORY QUICK TIE
□	TWO STORY QUICK TIE
△	THREE STORY QUICK TIE
○	FOUR STORY QUICK TIE
B	3/8" x QUICK TIE
C	1/2" x QUICK TIE
D	3/4" x QUICK TIE
R	1" x QUICK TIE



FOOTING SCHEDULE AND NOTES

TYPE	LENGTH	WIDTH	DEPTH	BOTTOM BARS
F2.0	2'-0"	2'-0"	1'-0"	3-#5 EA. WAY BOT.
F2.5	2'-6"	2'-6"	1'-0"	3-#5 EA. WAY BOT.
F3.0	3'-0"	3'-0"	1'-0"	3-#5 EA. WAY BOT.
F3.5	3'-6"	3'-6"	1'-0"	4-#5 EA. WAY BOT.
F4.0	4'-0"	4'-0"	1'-0"	4-#5 EA. WAY BOT.
F4.5	4'-6"	4'-6"	1'-0"	4-#5 EA. WAY BOT.

1. THIS FOUNDATION PLAN ONLY CONVEYS STRUCTURAL INFO. RELATED TO THE FOUNDATION. FOR GENERAL FEATURES, DIMENSIONS, CONDUITS, ELECTRICAL EMBEDS, STEP HEIGHTS, ECT., SEE ARCH. PLAN. ARCHITECTURAL PLAN SHOWN HERE IN FOR REFERENCE ONLY.
 2. FTGS. & FND. SHALL BE IN ACCORDANCE w/ LOCAL BUILDING CODES.
 3. SOIL COMPACTION AND FILL SHALL BE COMPACTED TO A MIN. OF 95% MODIFIED PROCTOR IN ACCORDANCE WITH ASTM D 1557.