

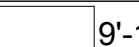





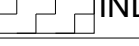


BEAM SCHEDULE				
PlotID	Length	Product	Plies	Net Qty
BM1	16-00-00	1 3/4" x 16" 1.9E Microllam@ LVL	2	4
BM2	22-00-00	1 3/4" x 20" 1.9E Microllam@ LVL	3	3

 SIMPSON HANGER
 HTU26 QTY:60
 SIMPSON HANGER
 HHUS48 QTY:11

Hatch Legend	
	9'-1 1/8" BEARING HEIGHT
	10'-1 1/8" BEARING HEIGHT
	19' 7" BEARING HEIGHT
	20' 7" BEARING HEIGHT
	VAULTED CEILING
	ATTIC SPACE
	INDICATES TRAY CLG.

General Notes:

- Per ANSI/TPI 1-2002 all " Truss to Wall" connections are the responsibility of the Building Designer, not the Truss Manufacturer.
- Use Manufacturer's specifications for all hanger connections unless otherwise.
- Trusses are to be 24" o.c. U.N.O.
- All hangers are to be Simpson or equivalent U.N.O. Use 10d x 1 1/2" Nails in hanger connections to single ply girder trusses.
- Trusses are not designed to support brick U.N.O.
- Dimensions are Feet-Inches- Sixteenths

Notes:

No back charges will be accepted by Builders FirstSource unless approved in writing first. 850-835-4541

ACQ lumber is corrosive to truss plates. Any ACQ lumber that comes in contact with truss plates (i.e. scabbed on tails) must have an approved barrier applied first.

Refer to BCSI-B1 Summary Sheet-Guide for handling, Installing and Bracing of Metal Plate Connected Wood Truss prior to and during truss installation.

It is the responsibility of the Contractor to ensure the proper orientation of the truss placement plans as to the construction documents and field conditions of the structure orientation. If a reversed or flipped layout is required, it will be supplied at no extra cost by Builders FirstSource.

It is the responsibility of the Contractor to make sure the placement of trusses are adjusted for plumbing drops, can lights, ect.... so the trusses do not interfere with these type of items.

All common framed roof or floor systems must be designed as to NOT impose any loads on the floor trusses below. The floor trusses have not been designed to carry any additional loads from above.

This truss placement plan was not created by an engineer, but rather by the Builders FirstSource staff and is solely to be used as an installation guide and does not require a seal. Complete truss engineering and analysis can be found on the truss design drawings which may be sealed by the truss design engineer.

Gable end trusses require continuous bottom chord bearing. Refer to local codes for wall framing requirements.

Although all attempts have been made to do so, trusses may not be designed symmetrically. Please refer to the individual truss drawings and truss placement plans for proper orientation and placement.



Freeport
 PHONE: 850-835-4541
 FAX: 850-835-4532

Jacksonville
 PHONE: 904-772-6100
 FAX: 904-772-1973

Tampa
 PHONE: 813-621-9831
 FAX: 813-628-8956

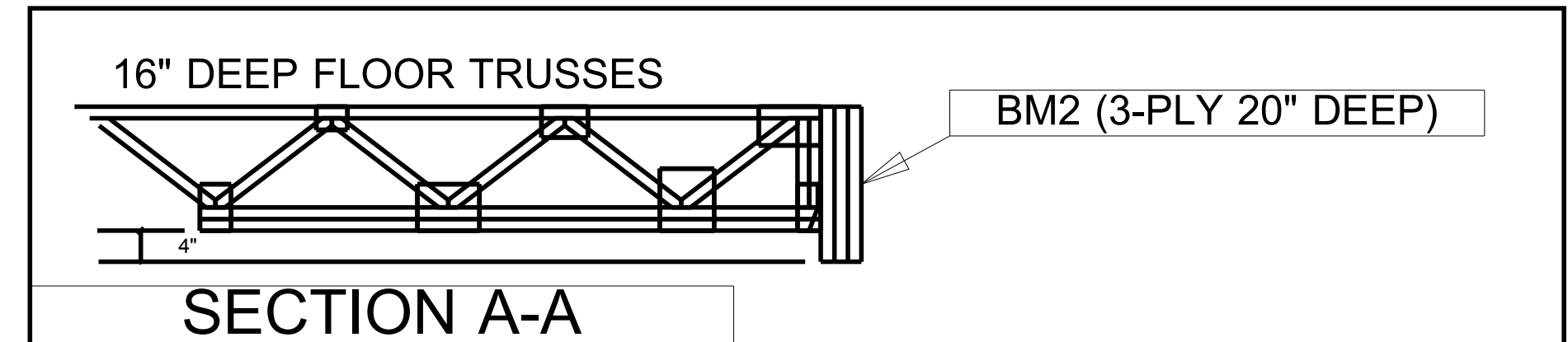
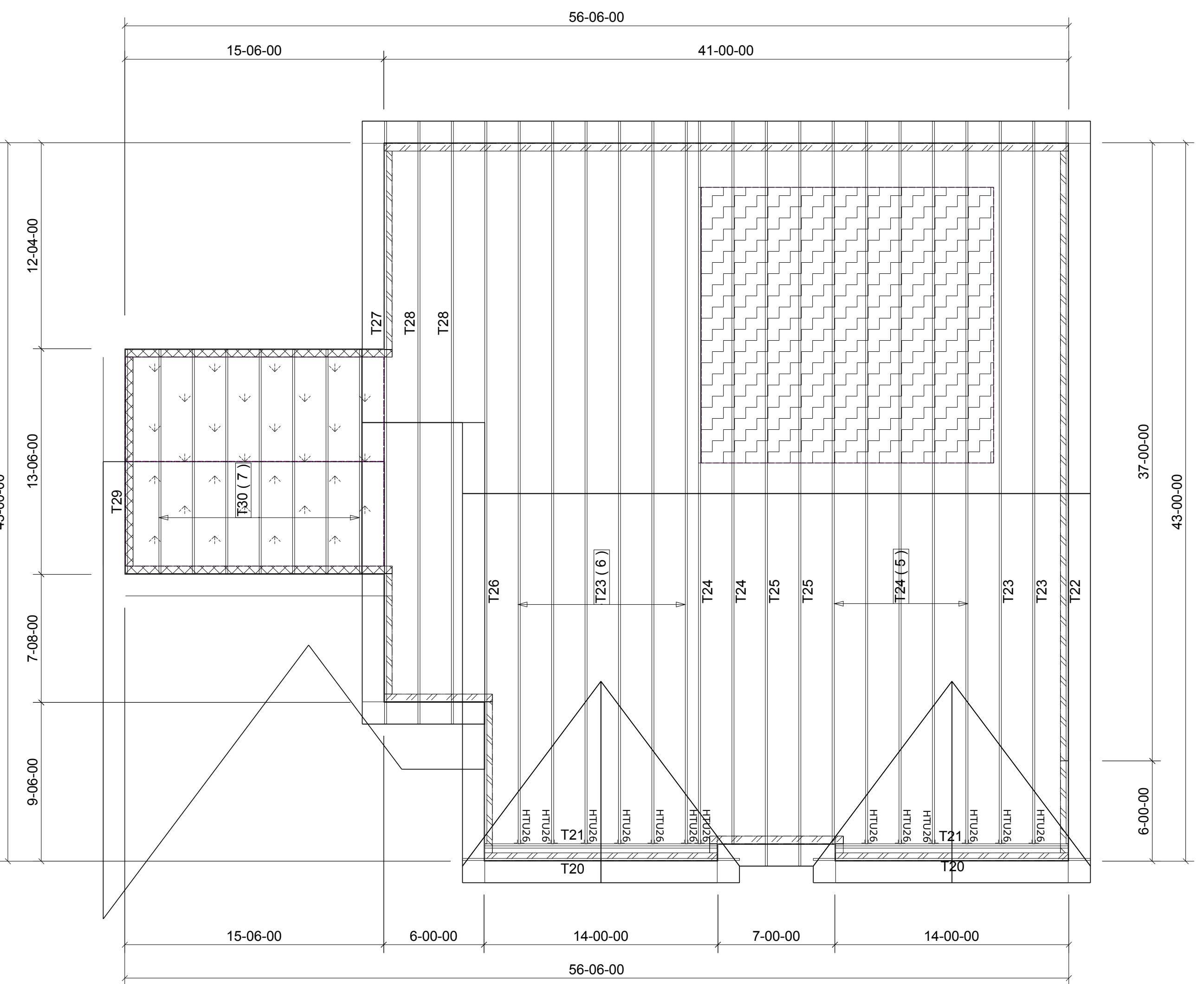
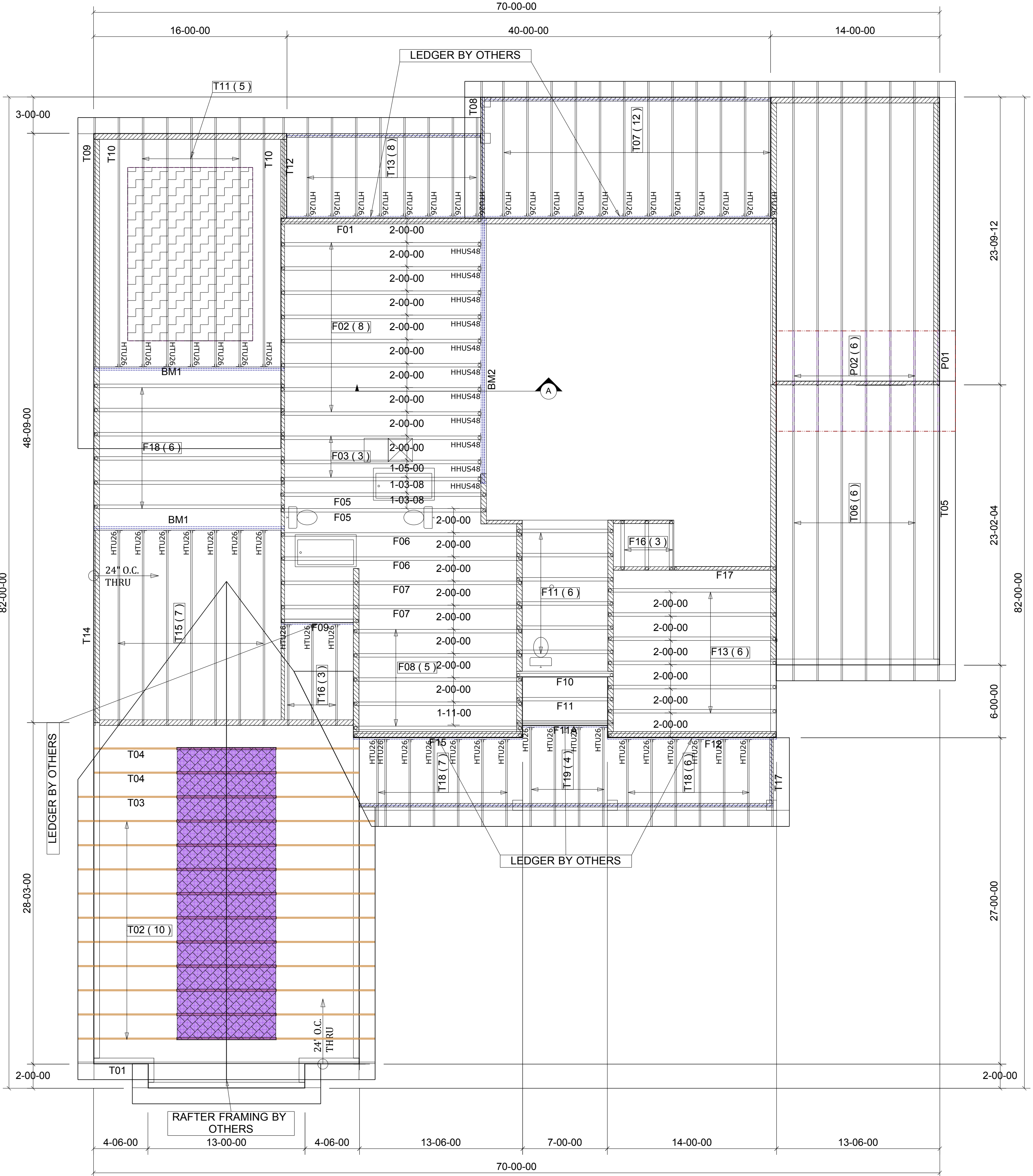
Builder: **STARR CUSTOM**

Legal Address: **LOT 167 PABLO CREEK**

Model: **4098**

Date: **06/15/16** Drawn By: **JAP** Original Ref #: **814104**

Floor 1 Job#: **827053** Floor 2 Job#: **N/A** Roof Job #: **814104**



TRUSS DESIGN SPECIFICATIONS

ROOF LOADING:20-7-0-10

FLOOR LOADING:40-10-0-5

WIND SPEED:130

WIND EXP:C

MITEK PLATE APPROVAL #'S 2197.2-2197.4, WEYERHAUSER PRODUCT #'S 1630.2-1630.10