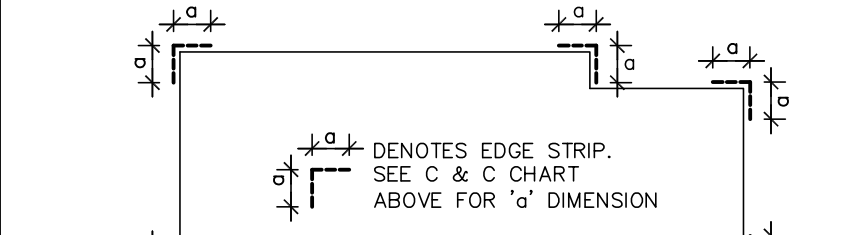


DESIGN SPECIFICATIONS

DESIGN CODE: 2014 FLORIDA BUILDING CODE - RESIDENTIAL
DESIGN IS VOID ONE YEAR AFTER THE DATE OF THE ORIGINAL PLANS, UNLESS PLANS HAVE BEEN REVIEWED FOR CODE COMPLIANCE.
DESIGN LOADS: ACTUAL AND UNIFORM

Table with 3 columns: COMPONENTS & CLADDING ULTIMATE DESIGN PRESSURES, GARAGE DOOR PRESSURES (PSF), and values for various components like TRIBUTARY AREA, INTERIOR ZONE, EDGE STRIP, etc.

THE VALUES ABOVE ARE ALLOWABLE WIND PRESSURE VALUES (ASD). THE ABOVE WIND PRESSURES HAVE BEEN REDUCED BY 0.60 AS PERMITTED BY THE ALLOWABLE STRESS DESIGN METHODOLOGY. NO FURTHER REDUCTION SHALL BE PERMITTED.
COMPONENT & CLADDING WALL ELEMENTS SHALL BE DESIGNED FOR BOTH POSITIVE AND NEGATIVE PRESSURES SHOWN IN TABLE ABOVE.



WIND LOADING: ASCE 7/10 FOR WIND UPLIFT, TRUSSES SHALL BE DESIGNED WITH A MIN. DEAD LOAD CONDITION OF 5 PSF TOP CHORD AND 5 PSF BOTTOM CHORD. REACTIONS CALCULATED FOR THE BEARING POINTS OF ROOF TRUSSES SHALL BE REDUCED, SPECIFICALLY, ATTIC FLOOR LIVE LOADS COMBINED WITH ROOF LIVE LOADS SHALL BE MULTIPLIED BY 0.75 WHEN COMBINED W/ DEAD LOAD.
BASIC WIND SPEED (ASCE 7-10) 130 MPH

MATERIAL SPECIFICATIONS

HARDWARE AND ANCHORS: ANCHOR BOLTS & THREADED ROD: SHALL BE IN ACCORDANCE WITH ASTM A 307 OR ASTM F 1554 GRADE 36.
WASHERS: SHALL BE IN ACCORDANCE WITH ASTM A500 (GRADE B). NUTS: SHALL BE IN ACCORDANCE WITH ASTM A 563 GRADE A HEX. METAL CONNECTORS: ALL METAL CONNECTORS WHICH ARE EXPOSED TO EXTERIOR SHALL BE GALVANIZED.

SCOPE OF SERVICE

MEANS AND METHODS: THE STRUCTURAL ENGINEER SHALL NOT HAVE CONTROL OR BE RESPONSIBLE FOR CONSTRUCTION MEANS, METHODS, TECHNIQUES, PROCEDURES, OR SEQUENCES FOR THE ACTS OR OMISSIONS OF THE CONTRACTOR OR ANY OTHER PERSONS PERFORMING THE WORK OR FOR THE FAILURE FOR ANY OF THEM TO CONSTRUCT THE WORK IN ACCORDANCE WITH THE CONTRACT DOCUMENTS.

USP CONNECTORS

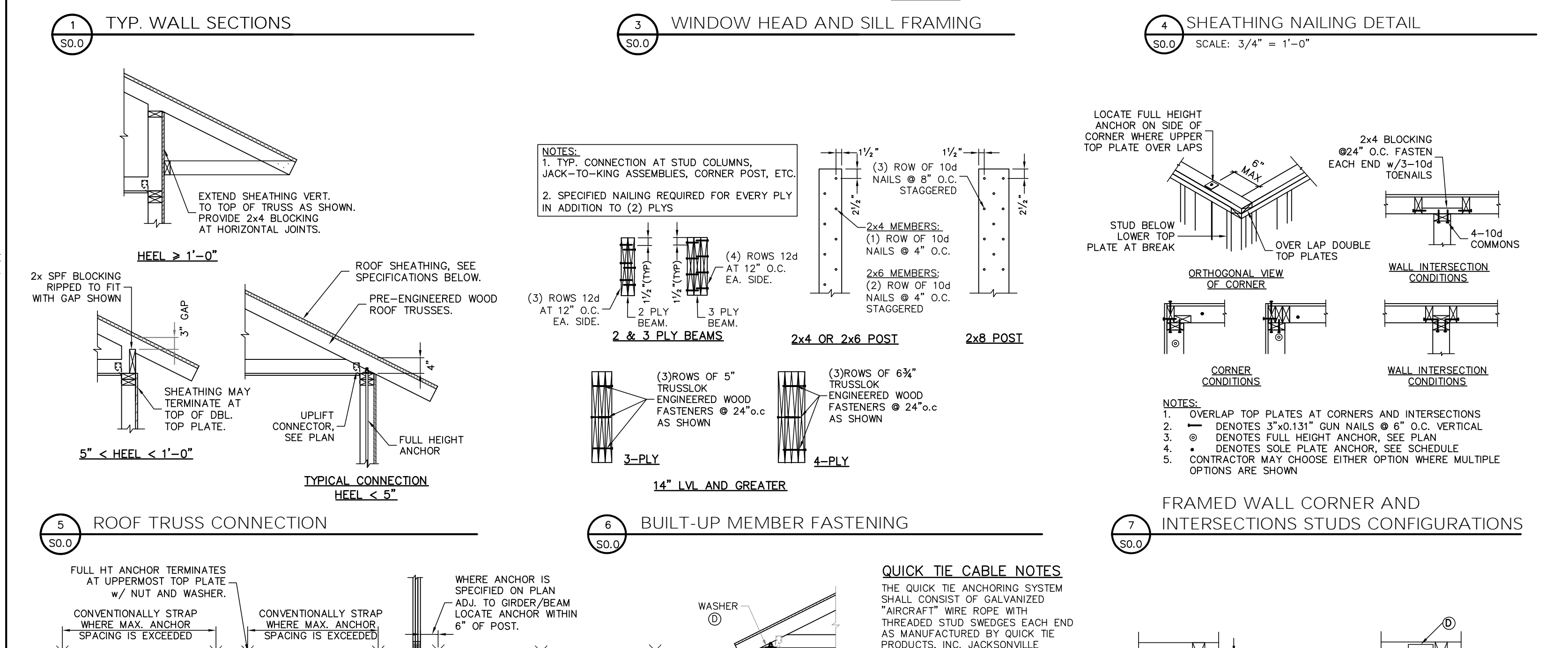
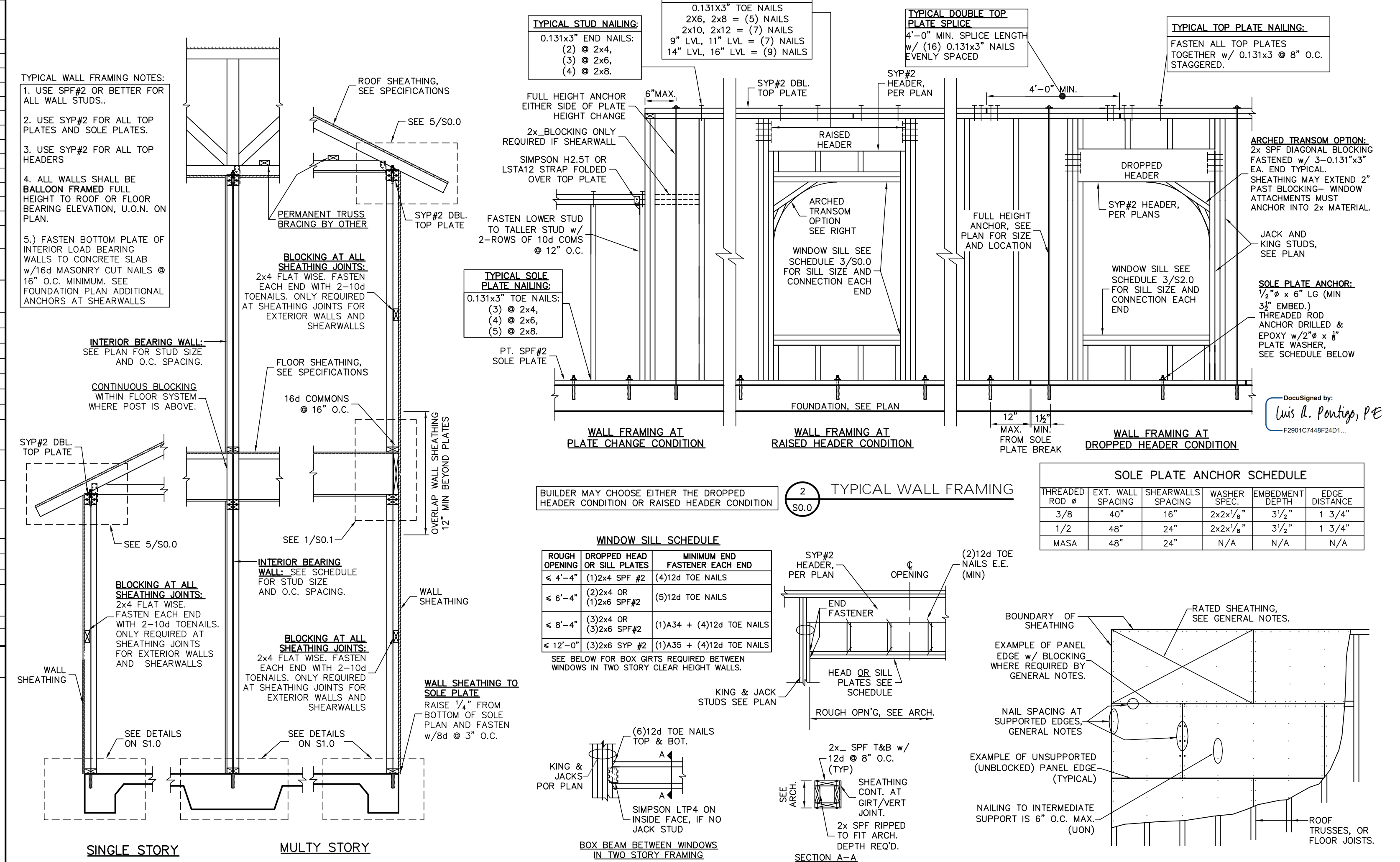
Table with 5 columns: CONNECTOR, UPLIFT (SYP, SPF), FASTENERS, and FL# CODE. Lists various connector types like USP A35, USP RT7, USP RTBA, etc.

SIMPSON CONNECTORS

Table with 5 columns: CONNECTOR, UPLIFT (SYP, SPF), FASTENERS, and FL# CODE. Lists Simpson connector types like A35, H2.5T, H8, MTS12, etc.

GENERAL NOTES & CONSTRUCTION SPECIFICATIONS

FLOOR SHEATHING SPECIFICATIONS: 23/32" T&O OSB OR PLYWOOD SHEATHING, GLUE AND NAIL WITH 10d COMMON @ 6" O.C. EDGE & FIELD.
ROOF SHEATHING SPECIFICATIONS: METAL - MIN. 29, 32/16, APA RATED OSB OR PLYWOOD SHEATHING, NAILED W/ 0.113x2" RING SHANK NAILS @ 6" O.C. EDGE & 6" O.C. FIELD.
WALL SHEATHING SPECIFICATIONS: FLEXIBLE FINISH - MIN. 7/8", 24/16, APA RATED OSB OR PLYWOOD SHEATHING, FASTENED W/ 8d @ 6" O.C. EDGE AND 6" O.C. FIELD.
MASONRY SPECIFICATIONS: MASONRY HAS BEEN DESIGNED IN ACCORDANCE WITH ACI 530-05, AND SHALL BE CONSTRUCTED IN ACCORDANCE WITH ACI 530.1-05.
CONCRETE MASONRY UNITS (CMU): CMU SHALL BE IN ACCORDANCE WITH ASTM C90-75, HOLLOW LOAD-BEARING (CMU), TYPE 1, GRADE N-1, NORMAL WEIGHT, WITH A MINIMUM COMPRESSIVE STRENGTH OF 1900 PSI.



WOOD FASTENING SCHEDULE

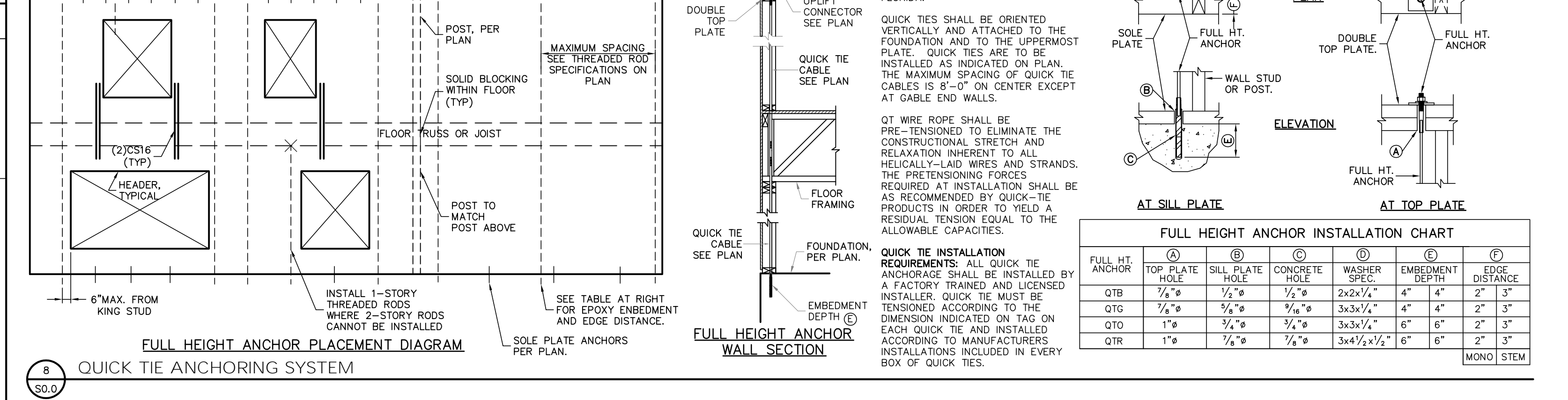
Table with 3 columns: MEMBERS, CONNECTION TYPE, and FASTENER. Lists fasteners for various wood connections like top plate to top plate, rim joist to top plate, etc.

BRICK NOTES / LINTEL SCHD

Table with 3 columns: LINTEL DIMENSION, MIN. BRG., and MAX. SPAN. Lists specifications for brick lintels of various sizes.

PLAN LEGEND AND ABBREVIATIONS

Table defining symbols and abbreviations used in the drawings, such as interior load bearing wall, gable x-brace, and various material abbreviations like ADJ, BM, BOT, etc.



Lou Pontigo and Associates, Inc.
420 Osceola Avenue
Jax. Beach, Florida 32250
Ph. 242-0908 Fax. 241-9557
FL. CA # 8344 SC. CA# 3579



Luis A. Pontigo, PE
FL PE #53311

Table with 2 columns: REVISIONS and DATE. Shows a list of revisions with dates.

FIELD ALTERATION
CONTRACTOR SHALL CONTACT LOU PONTIGO & ASSOCIATES PRIOR TO MAKING ANY STRUCTURAL FIELD MODIFICATIONS WHICH MAY VARY FROM THE INTENT OF ORIGINAL CONSTRUCTION DOCUMENTS.

STARR CUSTOM HOMES
LOT 167
PABLO CREEK RESERVE

DESIGN CRITERIA AND GENERAL NOTES
DO NOT SCALE DIMENSIONS FROM THESE DRAWINGS. IF A DIMENSION IS UNCLEAR REFER TO THE ARCHITECTURAL DRAWINGS OR CONTACT THE E.O.R.

Table with 2 columns: PLAN NAME and DATE. Lists project information including design name, date, scale, and sheet number.

REVISIONS	DATE

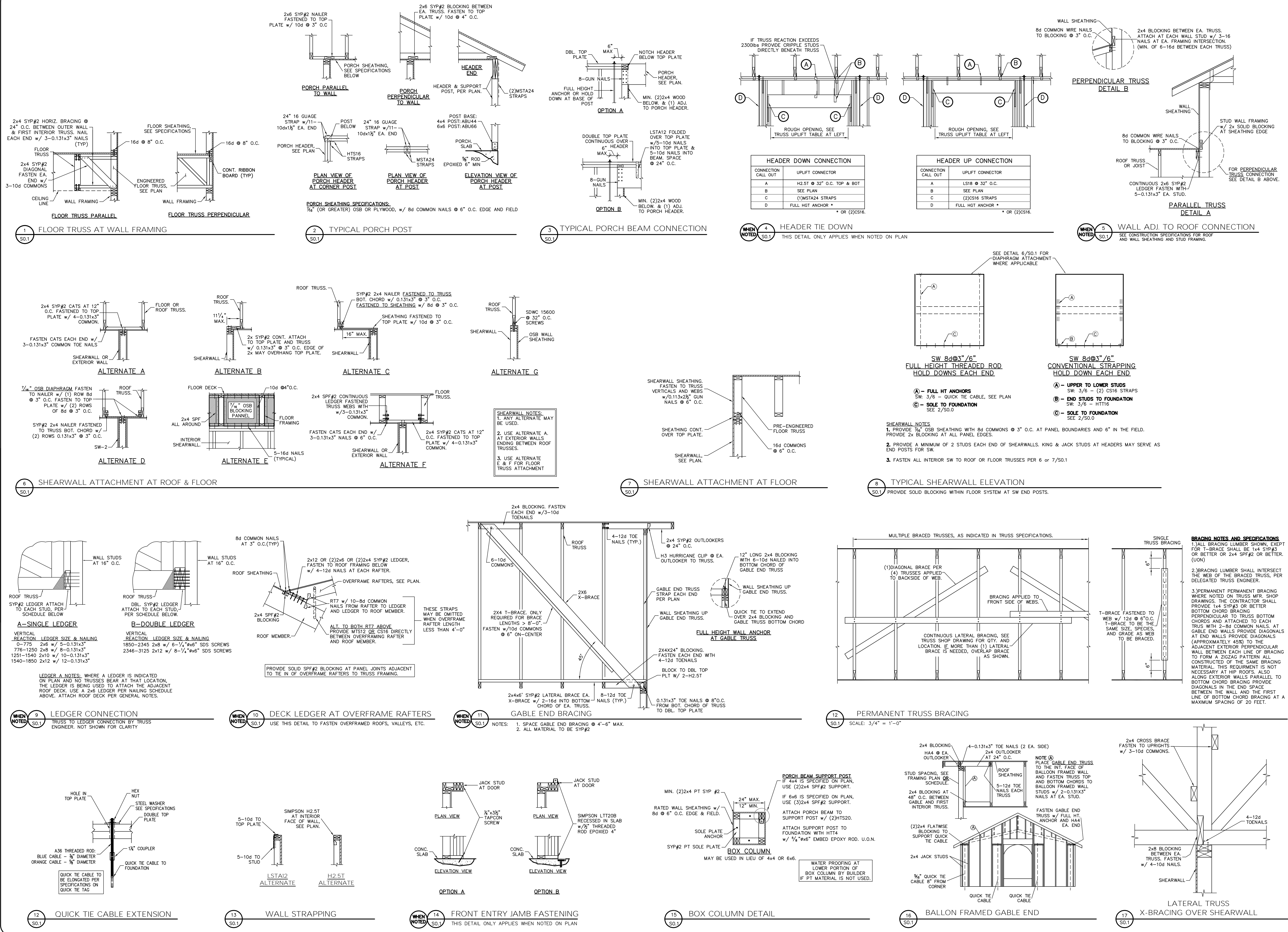
**FIELD ALTERATION**  
CONTRACTOR SHALL CONTACT LOU PONTIGO & ASSOCIATES PRIOR TO MAKING ANY STRUCTURAL FIELD MODIFICATIONS WHICH MAY VARY FROM THE INTENT OF THE ORIGINAL CONSTRUCTION DOCUMENTS. ANY FIELD ALTERATIONS MADE PRIOR TO BEING APPROVED BY LOU PONTIGO & ASSOCIATES MAY RESULT IN ADDITIONAL ENGINEERING OR INSPECTION FEES.

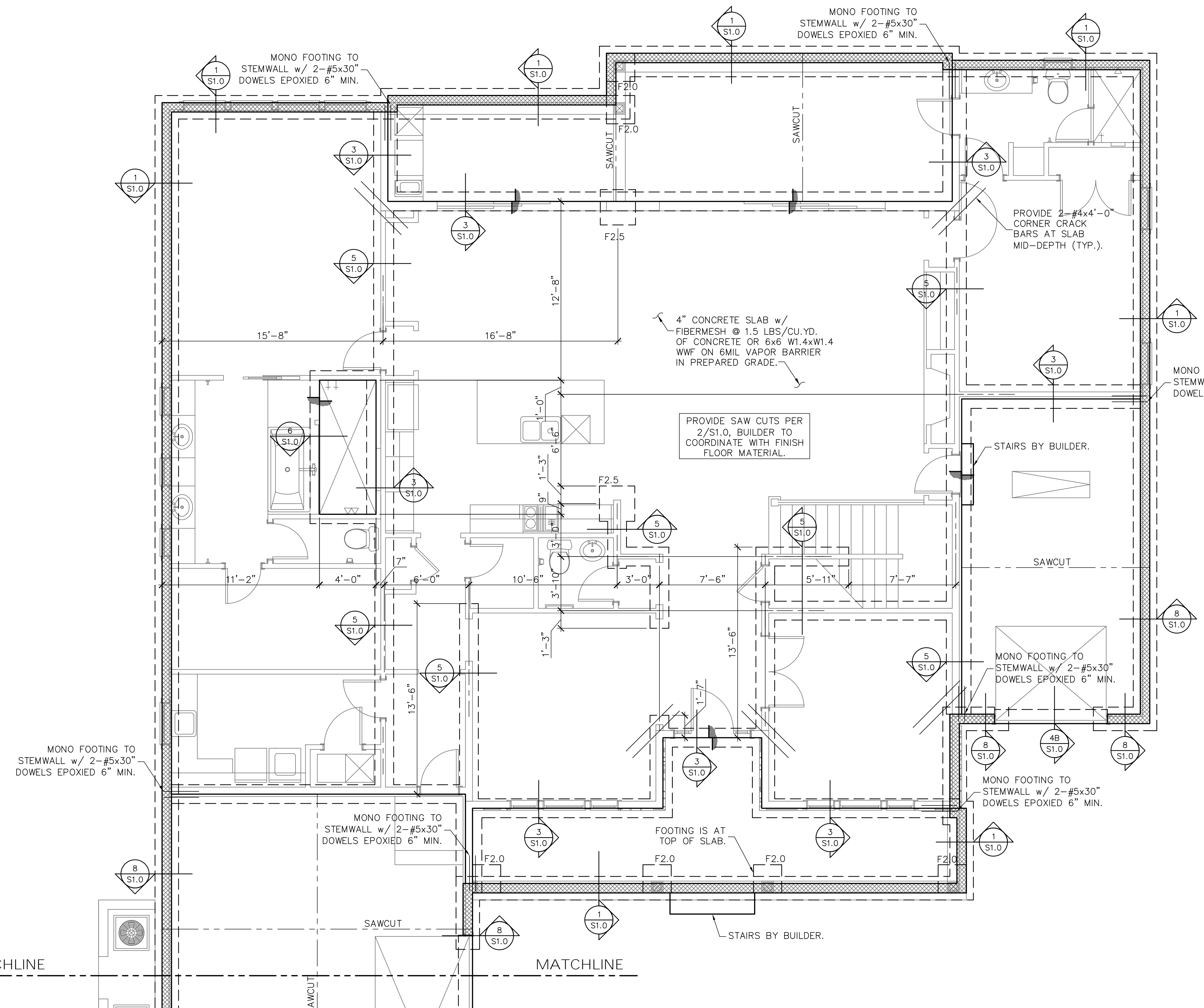
**STARR CUSTOM HOMES**  
**LOT 167**  
**PABLO CREEK RESERVE**

**TYPICAL FRAMING DETAILS**

DO NOT SCALE DIMENSIONS FROM THESE DRAWINGS. IF A DIMENSION IS UNCLEAR REFER TO THE ARCHITECTURAL DRAWINGS OR CONTACT THE E.O.R.

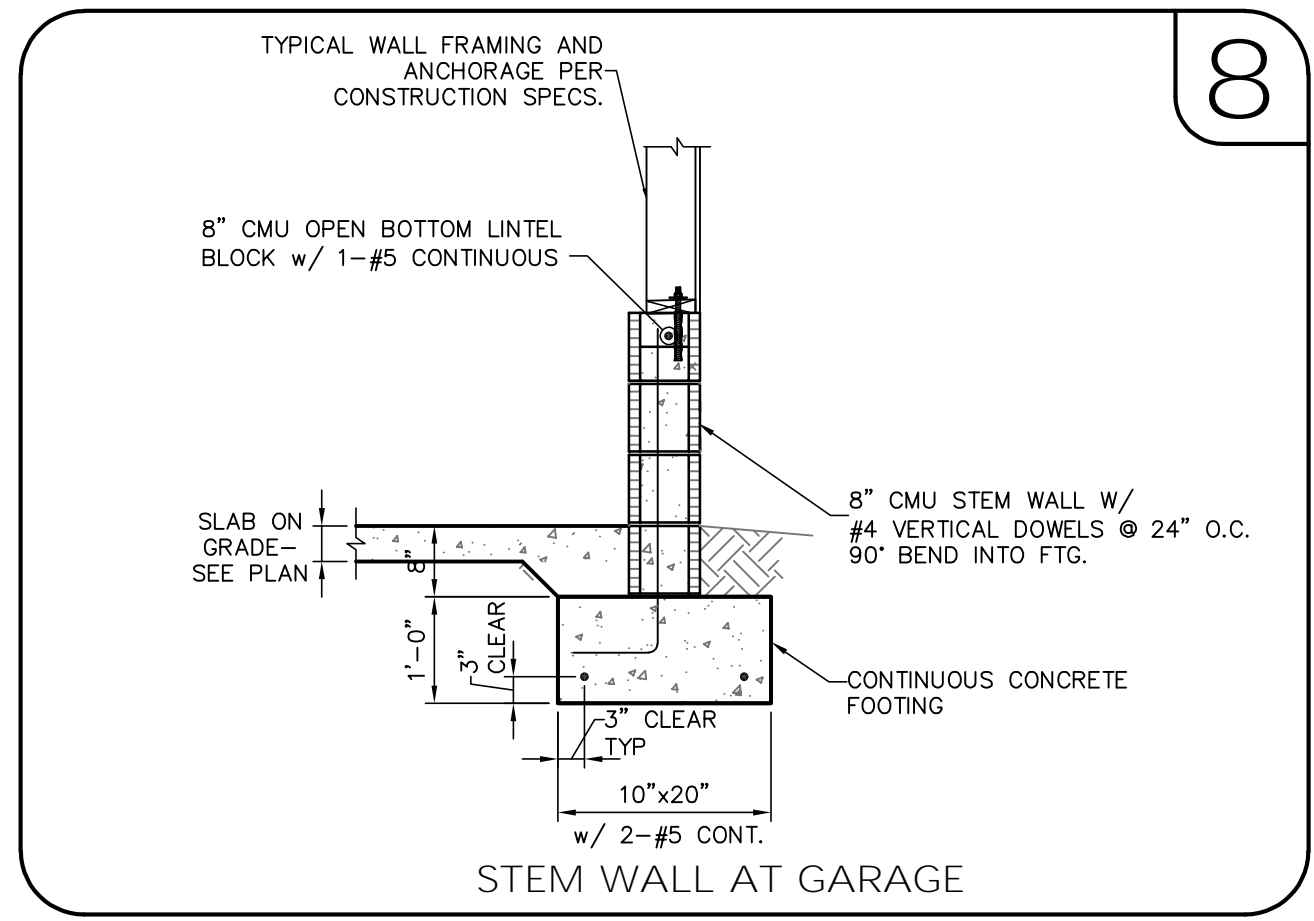
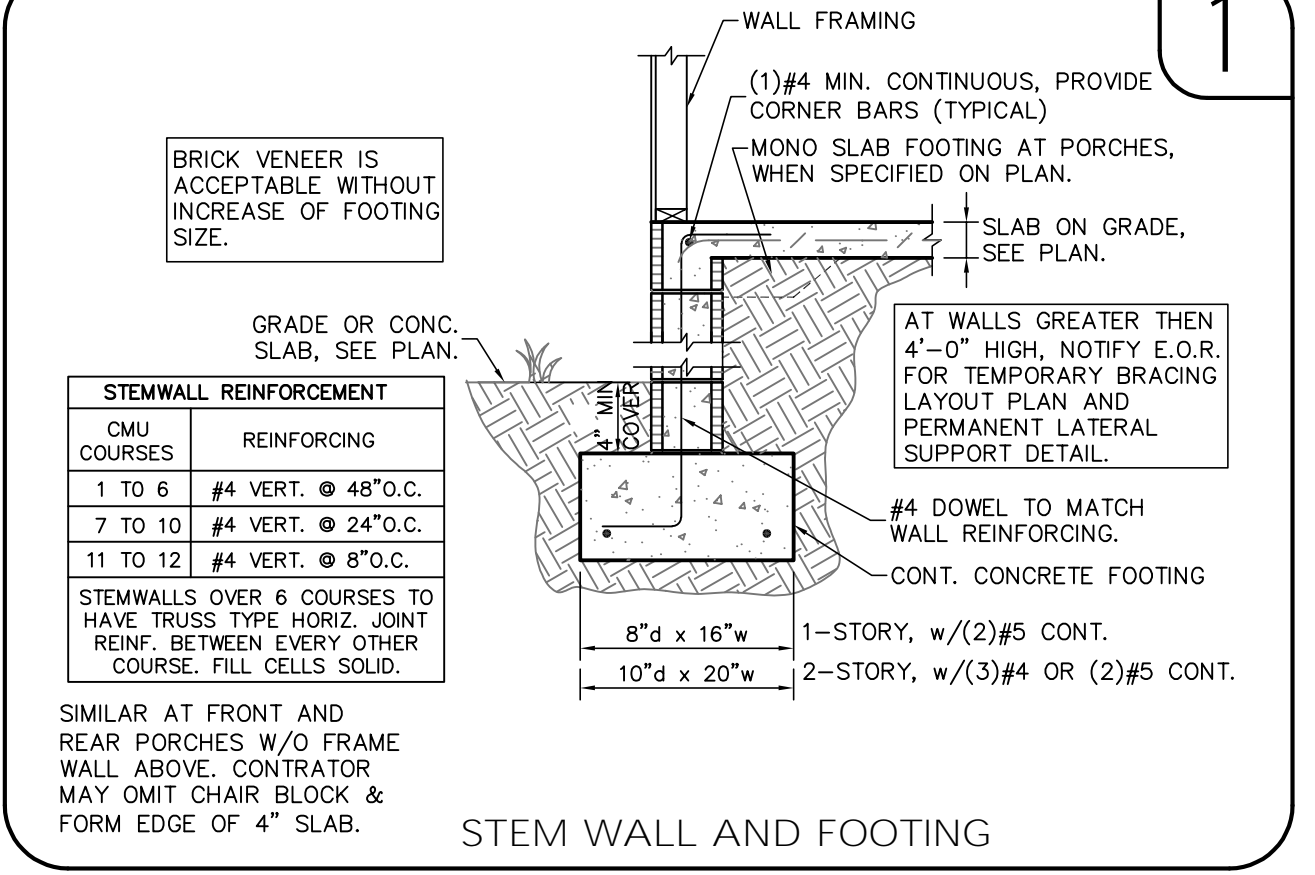
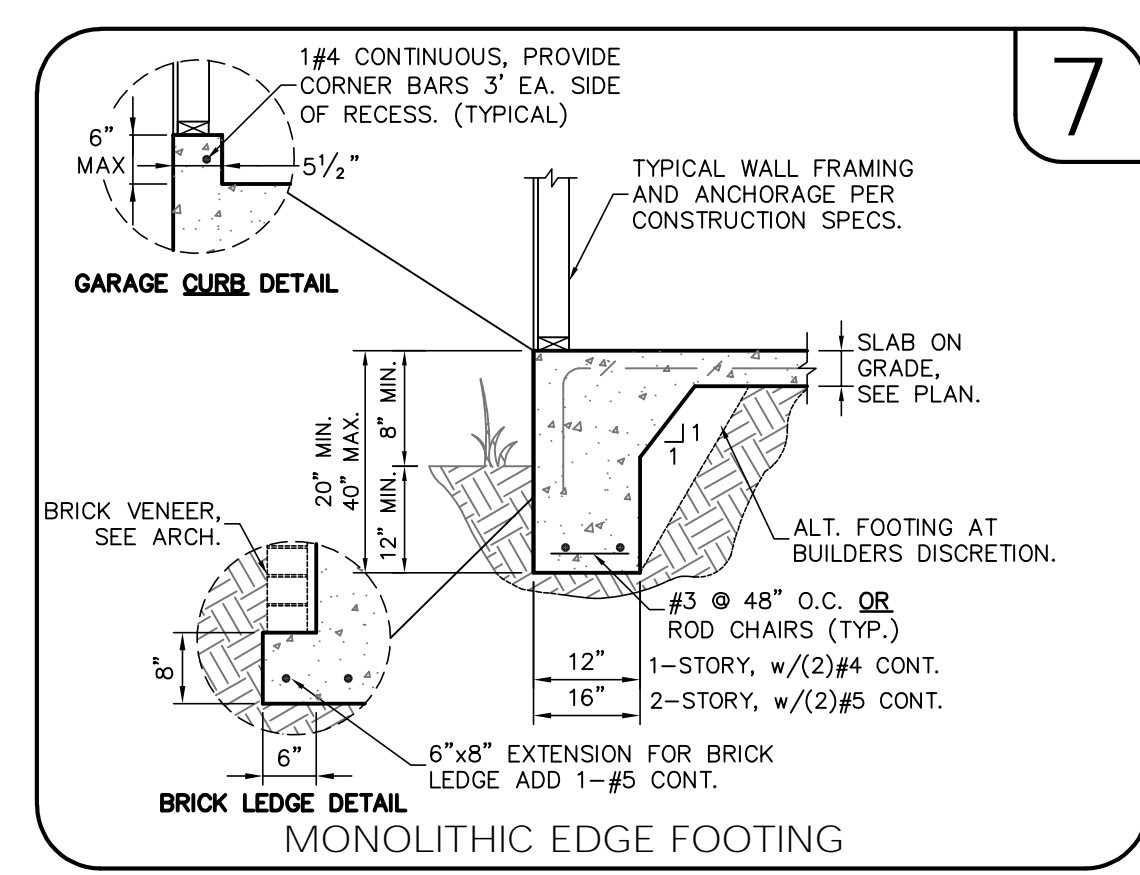
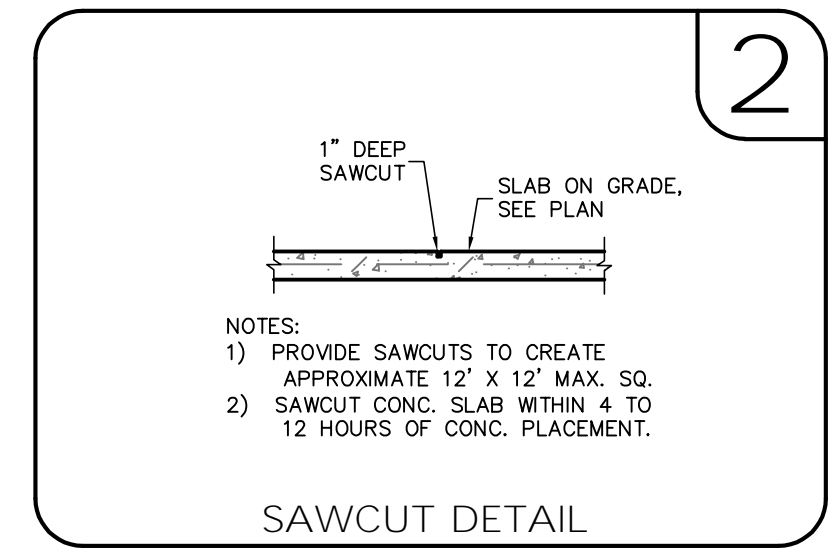
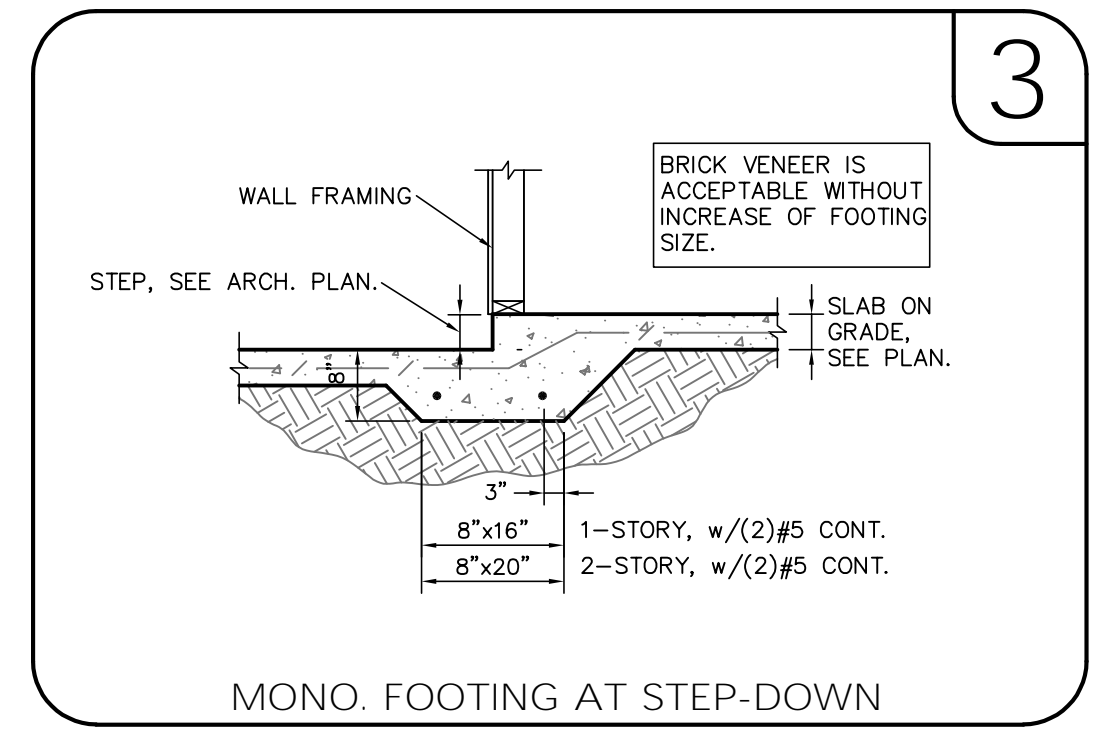
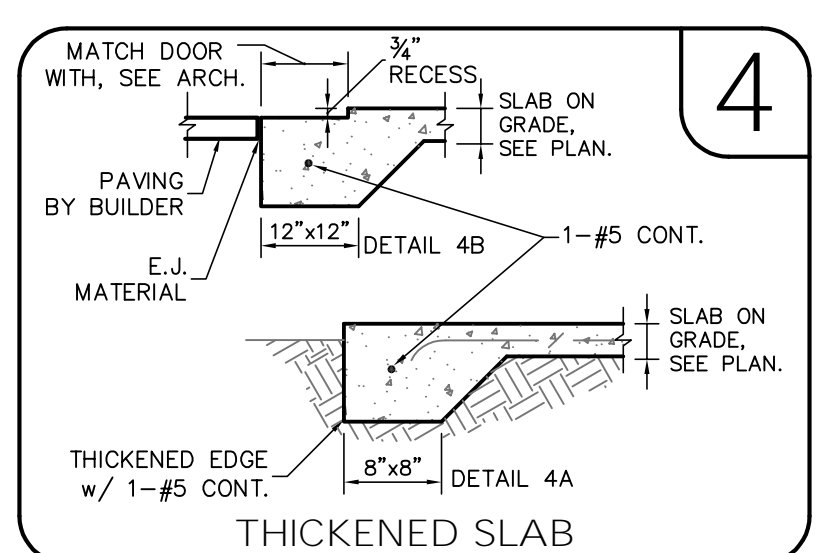
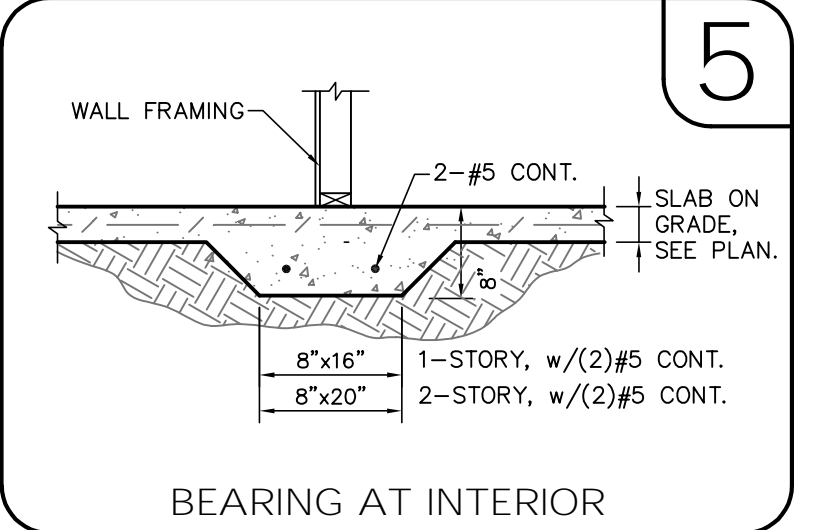
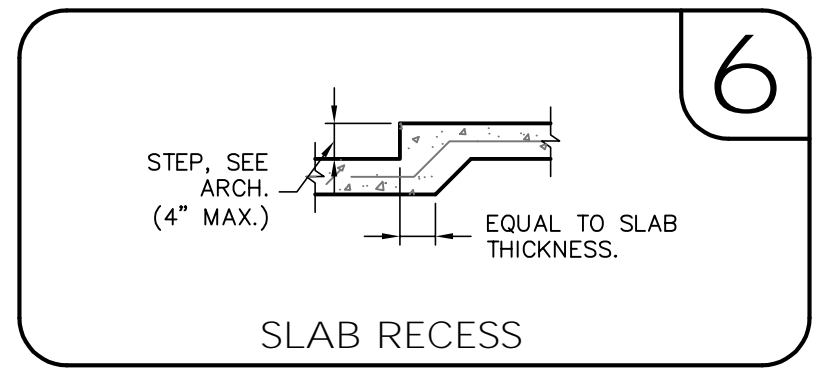
PLAN NAME	SPEC HOME
DESIGN/DRAWN/CHECKED	CS / JB / LAP
DATE	07.13.16
SCALE	AS NOTED
LPA No.	DRB0-16-00465
CONTROL No.	6269
SHEET	SO.1





**SYMBOLS LEGEND**

---	DESIGNATES FOOTING LINE
---	DESIGNATES SAWCUT LINE
▨	INTERIOR LOAD BEARING WALL
▨	DESIGNATES SLAB RECESS
---	BEAM OR TRUSS, SEE PLAN



**FOUNDATION PLAN**  
 SCALE: 1/4" = 1'-0"

**FOOTING SCHEDULE AND NOTES**

BOTTOM BARS	DEPTH	WIDTH	LENGTH	TYPE
3-#5 EA. WAY BOT.	1'-0"	2'-0"	2'-0"	F2.0
3-#5 EA. WAY BOT.	1'-0"	2'-6"	2'-6"	F2.5
3-#5 EA. WAY BOT.	1'-0"	3'-0"	3'-0"	F3.0
4-#5 EA. WAY BOT.	1'-0"	3'-6"	3'-6"	F3.5
4-#5 EA. WAY BOT.	1'-0"	4'-0"	4'-0"	F4.0
4-#5 EA. WAY BOT.	1'-0"	4'-6"	4'-6"	F4.5

1. THIS FOUNDATION PLAN ONLY CONVEYS STRUCTURAL INFO. RELATED TO THE FOUNDATION. FOR GENERAL FEATURES, DIMENSIONS, CONDUITS, ELECTRICAL EMBEDS, STEP HEIGHTS, ECT., SEE ARCH. PLAN, ARCHITECTURAL PLAN SHOWN HERE IN FOR REFERENCE ONLY.  
 2. FTGS. & FND. SHALL BE IN ACCORDANCE W/ LOCAL BUILDING CODES.  
 3. SOIL COMPACTION AND FILL SHALL BE COMPLETED TO A MIN. OF 95% MODIFIED PROCTOR IN ACCORDANCE WITH ASTM D 1557.

**LP & A**  
 Lou Pontigo and Associates, Inc.  
 420 Osceola Avenue  
 Jax. Beach, Florida 32250  
 Ph. 242-0908 Fax. 241-9557  
 FL. CA # 8344 SC. CA# 3579

**LUIS A. PONTIGO**  
 LICENSE  
 No. 33311  
 STATE OF FLORIDA  
 PROFESSIONAL ENGINEER

7/14/2016 8:53:35 AM

Luis A. Pontigo, PE  
 FL PE #53311

**REVISIONS**

NO.	DATE	DESCRIPTION

**FIELD ALTERATION**  
 CONTRACTOR SHALL CONTACT LOU PONTIGO & ASSOCIATES PRIOR TO MAKING ANY STRUCTURAL FIELD MODIFICATIONS WHICH MAY VARY FROM THE INTENT OF THE ORIGINAL CONSTRUCTION DOCUMENTS. ANY FIELD ALTERATIONS MADE PRIOR TO BEING APPROVED BY LOU PONTIGO & ASSOCIATES MAY RESULT IN ADDITIONAL ENGINEERING OR INSPECTION FEES.

STARR CUSTOM HOMES  
 LOT 167  
 PABLO CREEK RESERVE

**FOUNDATION PLAN**

DO NOT SCALE DIMENSIONS FROM THESE DRAWINGS. IF A DIMENSION IS UNCLEAR REFER TO THE ARCHITECTURAL DRAWINGS OR CONTACT THE E.O.R.

**PLAN NAME**  
 SPEC HOME

**DESIGN/DRAWN/CHECKED**  
 CS / JB / LAP

**DATE**  
 07.13.16

**SCALE**  
 AS NOTED

**LPA No.**  
 DRB0-16-00465

**CONTROL No.**  
 6269

**SHEET**  
 S1.0

SHEET 3 OF 10

SYMBOLS LEGEND	
	DESIGNATES FOOTING LINE
	DESIGNATES SAWCUT LINE
	INTERIOR LOAD BEARING WALL
	DESIGNATES SLAP RECESS
	BEAM OR TRUSS, SEE PLAN



Lou Pontigo and Associates, Inc.

420 Osceola Avenue  
Jax. Beach, Florida 32250  
Ph. 242-0908 Fax. 241-9557  
FL CA # 8344 SC. CA# 3579



Luis A. Pontigo, PE  
FL PE#53311

REVISIONS	DATE

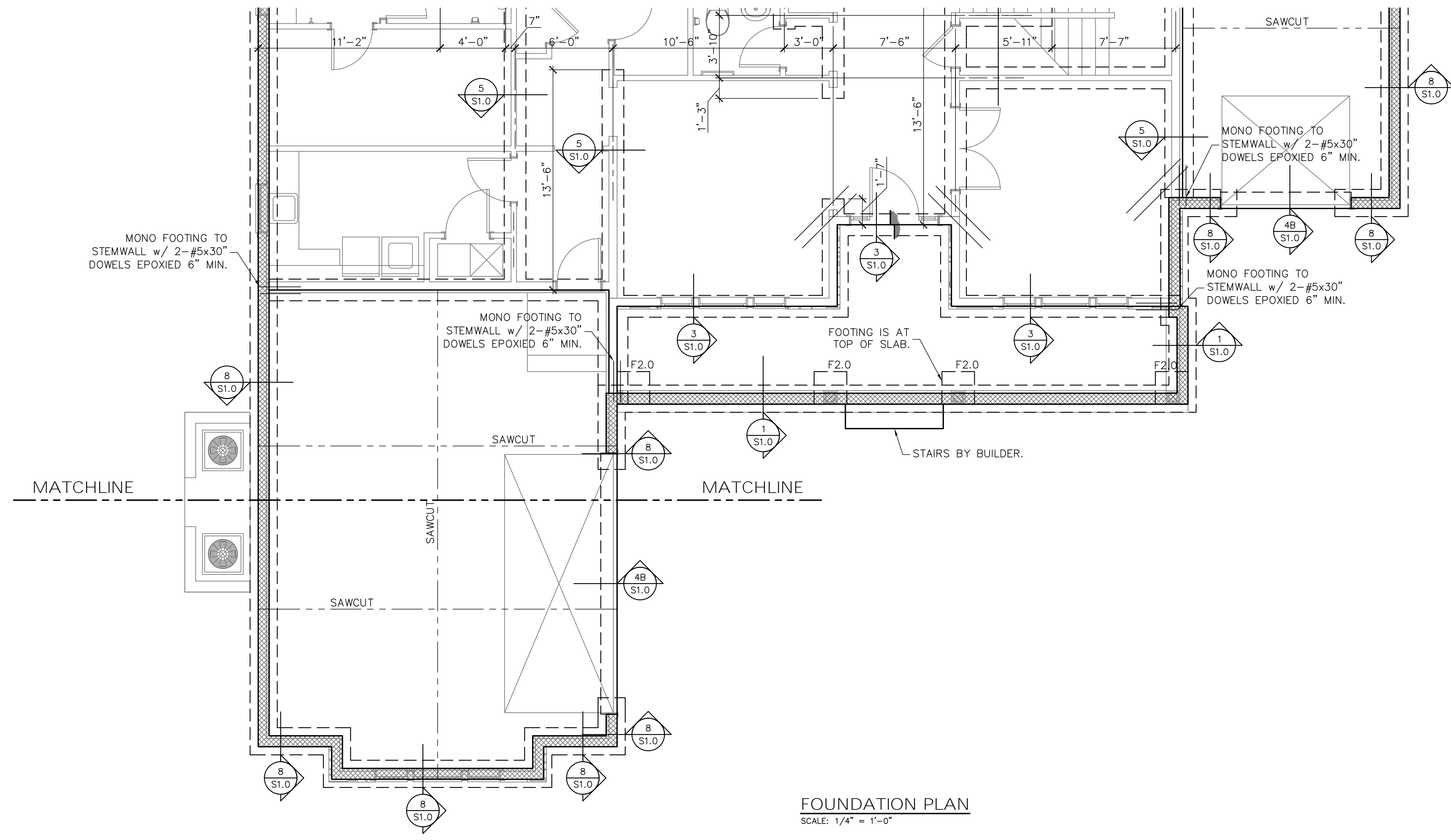
**FIELD ALTERATION**  
CONTRACTOR SHALL CONTACT LOU PONTIGO & ASSOCIATES PRIOR TO MAKING ANY STRUCTURAL FIELD MODIFICATIONS WHICH MAY VARY FROM THE INTENT OF THE ORIGINAL CONSTRUCTION DOCUMENTS. ANY FIELD ALTERATIONS MADE PRIOR TO BEING APPROVED BY LOU PONTIGO & ASSOCIATES MAY RESULT IN ADDITIONAL ENGINEERING OR INSPECTION FEES.

STARR CUSTOM HOMES  
LOT 167  
PABLO CREEK RESERVE

**FOUNDATION PLAN**

DO NOT SCALE DIMENSIONS FROM THESE DRAWINGS. IF A DIMENSION IS UNCLEAR REFER TO THE ARCHITECTURAL DRAWINGS OR CONTACT THE E.O.R.

PLAN NAME	SPEC HOME
DESIGN/DRAWN/CHECKED	CS / JB / LAP
DATE	07.13.16
SCALE	AS NOTED
LPA No.	DRBD-16-00465
CONTROL No.	6269
SHEET	S1.01
SHEET	4 OF 10



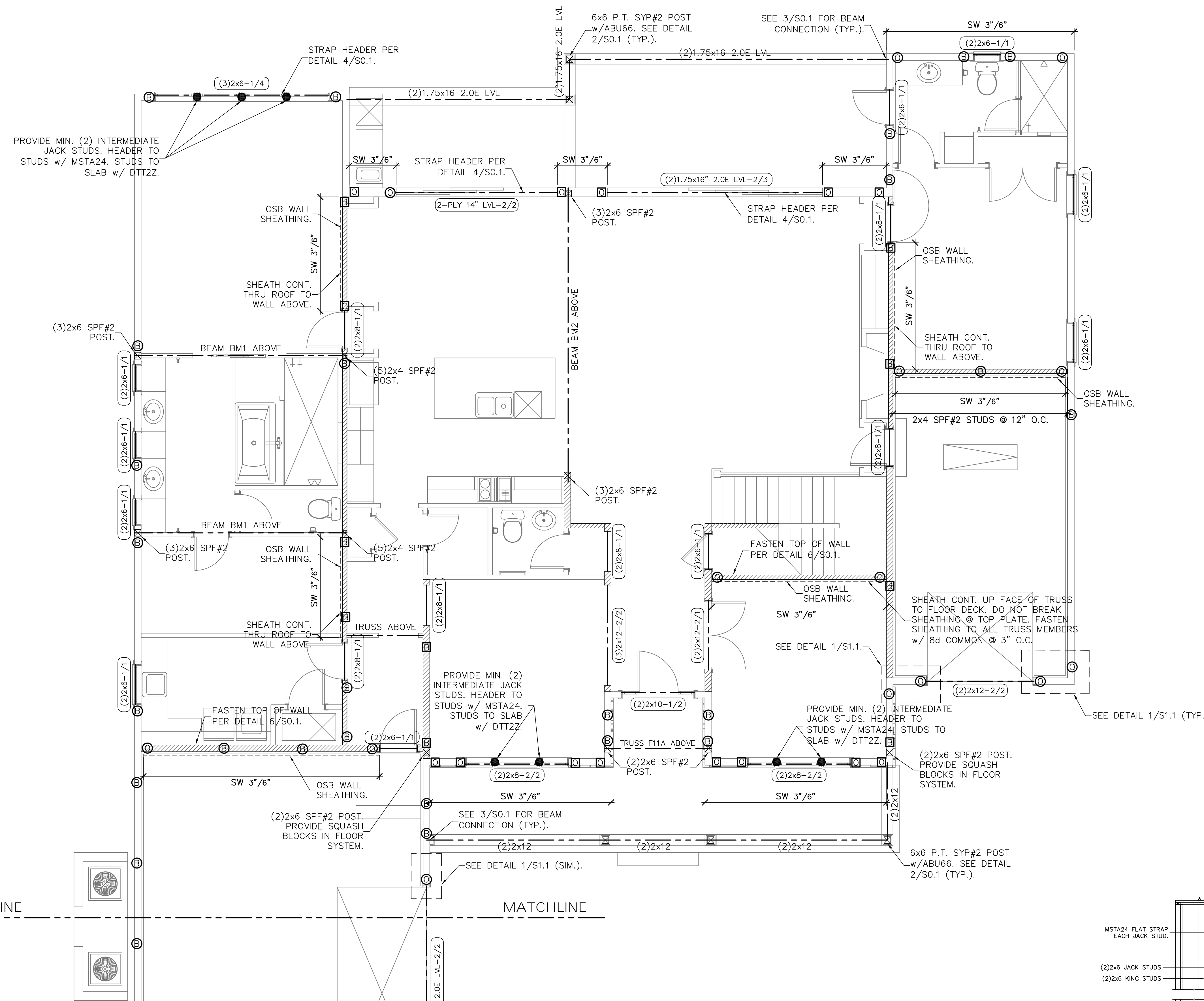
**FOUNDATION PLAN**  
SCALE: 1/4" = 1'-0"

FOOTING SCHEDULE AND NOTES				
BOTTOM BARS	DEPTH	WIDTH	LENGTH	TYPE
3-#5 EA. WAY BOT.	1'-0"	2'-0"	2'-0"	F2.0
3-#5 EA. WAY BOT.	1'-0"	2'-6"	2'-6"	F2.5
3-#5 EA. WAY BOT.	1'-0"	3'-0"	3'-0"	F3.0
4-#5 EA. WAY BOT.	1'-0"	3'-6"	3'-6"	F3.5
4-#5 EA. WAY BOT.	1'-0"	4'-0"	4'-0"	F4.0
4-#5 EA. WAY BOT.	1'-0"	4'-6"	4'-6"	F4.5

1. THIS FOUNDATION PLAN ONLY CONVEYS STRUCTURAL INFO. RELATED TO THE FOUNDATION. FOR GENERAL FEATURES, DIMENSIONS, CONDUITS, ELECTRICAL EMBEDS, STEP HEIGHTS, ECT., SEE ARCH. PLAN, ARCHITECTURAL PLAN SHOWN HERE IN FOR REFERENCE ONLY.

2. FTGS. & FND. SHALL BE IN ACCORDANCE w/ LOCAL BUILDING CODES.

3. SOIL COMPACTION AND FILL SHALL BE COMPACTED TO A MIN. OF 95% MODIFIED PROCTOR IN ACCORDANCE WITH ASTM D 1557.



**FIRST LEVEL WALL FRAMING PLAN**  
SCALE: 1/4" = 1'-0"

**SYMBOLS LEGEND**

	DESIGNATES SHEARWALL. THE HIDDEN LINE DESIGNATES SIDE OF WALL THE SHEARWALL SHEATHING TO BE APPLIED. 8d @ 2' DESIGNATES 8d COMMON @ 3" O.C. EDGE & 6" O.C. "IN THE FIELD."
	DESIGNATES THE HEADER SIZE, NUMBER OF PLY'S & JACK/KING STUDS.
	DESIGNATES THE SINGLE PLY HEADER AND JACK/KING STUDS NEEDED FOR SUPPORT HEADER. SEE DETAIL 4/SO.0.
	BEAM OR TRUSS. SEE PLAN.
	DTT2Z w/ 1/2" THREADED ROD EPOXIED 4".

**QUICK-TIE LEGEND**

SHAPE DEFINES NUMBER OF STORES  
LETTER DEFINES DIAMETER OF Q.T. WIRE ROPE

SHAPES:  
 ONE STORY QUICK TIE  
 TWO STORY QUICK TIE  
 THREE STORY QUICK TIE  
 FOUR STORY QUICK TIE

LETTER:  
 B 3/8" @ QUICK TIE  
 G 1/2" @ QUICK TIE  
 O 5/8" @ QUICK TIE

**WALL STUD SCHEDULE**

LOCATION	PLATE HEIGHT	STUD SIZE & SPACING
EXTERIOR	9'-1" MAX	2x4 SPF#2 @ 16" O.C.
EXTERIOR	10'-1" MAX	2x6 SPF#2 @ 16" O.C. @ 12" O.C.
EXTERIOR	10'-1" TO 14'-0" MAX	2x4 SPF#2 @ 16" O.C.
INTERIOR	10'-0" MAX	2x4 SPF#2 @ 16" O.C.
INTERIOR	12'-0" MAX	2x6 SPF#2 @ 16" O.C. @ 12" O.C.

- STUD NOTES:**
- WALL STUDS SPECIFIED ON PLAN SUPERSEDE THIS TABLE.
  - MINIMUM STUD SIZE AND SPACING ARE SHOWN. CONTRACTOR MAY INCREASE STUD SIZE TO MEET ARCHITECTURAL REQUIREMENTS.
  - SPF DENOTES SPRUCE PINE FIR. SYP DENOTES SOUTHERN YELLOW PINE.
  - USE SPF#2 FOR ALL TOP PLATES AND SOLE PLATES.
  - FASTEN BOTTOM PLATE OF INTERIOR LOAD BEARING WALLS TO CONCRETE SLAB w/ 16d MASONRY CUT NAILS @ 16" O.C. MINIMUM. SEE FOUNDATION PLAN FOR ADDITIONAL ANCHORS AT SHEARWALLS.

- GENERAL NOTES**
- SEE DETAIL 2/SO.0 FOR WALL FRAMING DETAIL. SEE WALL STUD SCHEDULE THIS SHEET FOR STUD SIZES AND SPACING AT GIRDERS AND BEAMS. PROVIDE STUDS BELOW TO MATCH BEAM/GIRDER PILES.
  - SEE SHEET SO.0 FOR ROOF AND FLOOR SHEATHING SPECIFICATIONS.
  - WHERE FRAMING MEMBERS CONSIST OF MULTIPLE PILES (BEAMS, HEADER, AND STUDS) FASTEN PILES TOGETHER PER DETAIL 6/SO.0.
  - INSTALL SOLE PLATE ANCHORS PER DETAIL 2/SO.0.
  - AT SHEARWALLS, PROVIDE DIAPHRAGM ATTACHMENT PER DETAIL 6 & 7/SO.1.
  - FOR ATTACHMENT OF EXTERIOR WALLS THAT TERMINATE BETWEEN TRUSSES, SEE 6A/SO.1.
  - AT PORCHES, SEE DETAIL 2/SO.1 FOR FRAMING AND HOLD DOWNS.

**LP & A**  
Lou Pontigo and Associates, Inc.  
420 Osceola Avenue  
Jax. Beach, Florida 32250  
Ph. 242-0908 Fax. 241-9557  
FL. CA # 8344 SC. CA# 3579

**LUIS A. PONTIGO**  
LICENSE  
No. 33311  
STATE OF FLORIDA  
PROFESSIONAL ENGINEER

Luis A. Pontigo, PE  
FL PE#53311

**REVISIONS**

NO.	DATE	DESCRIPTION

**FIELD ALTERATION**  
CONTRACTOR SHALL CONTACT LOU PONTIGO & ASSOCIATES PRIOR TO MAKING ANY STRUCTURAL FIELD MODIFICATIONS WHICH MAY VARY FROM THE INTENT OF THE ORIGINAL CONSTRUCTION DOCUMENTS. ANY FIELD ALTERATIONS MADE FROM TO BEING APPROVED BY LOU PONTIGO & ASSOCIATES MAY RESULT IN ADDITIONAL ENGINEERING OR INSPECTION FEES.

STARR CUSTOM HOMES  
LOT 167  
PABLO CREEK RESERVE

**1ST FLOOR FRAMING PLAN**

DO NOT SCALE DIMENSIONS FROM THESE DRAWINGS. IF A DIMENSION IS UNCLEAR REFER TO THE ARCHITECTURAL DRAWINGS OR CONTACT THE E.O.R.

**PLAN NAME**  
SPEC HOME

**DESIGN/DRAWN/CHECKED**  
CS / JB / LAP

**DATE**  
07.13.16

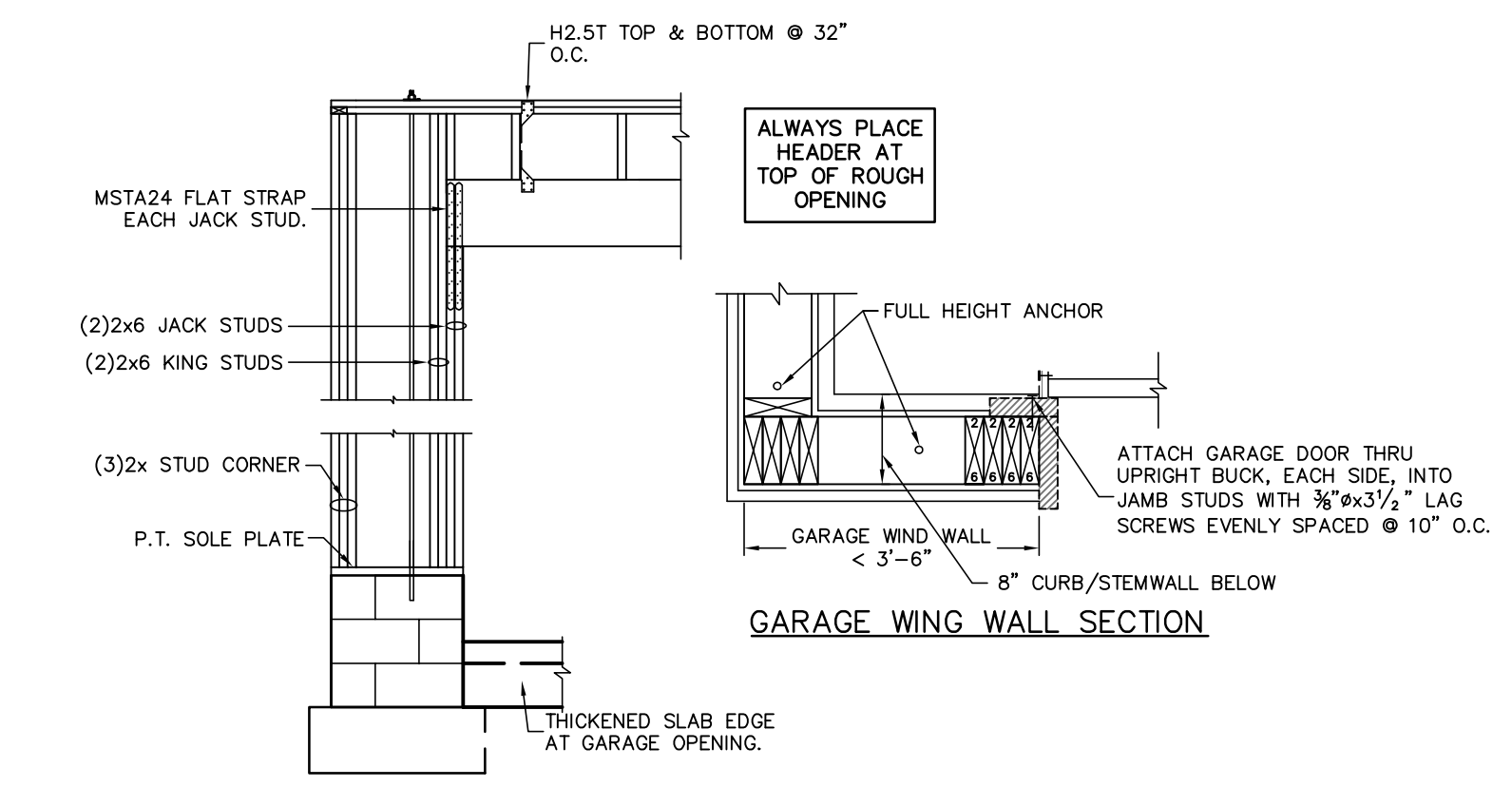
**SCALE**  
AS NOTED

**LPA No.**  
DRBD-16-00465

**CONTROL No.**  
6269

**SHEET**  
S11

**SHEET 5 OF 10**

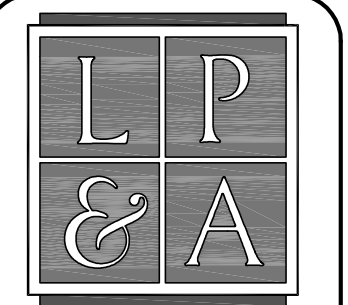


**GARAGE WING WALL ELEVATION NOTES**

- STEM WALL SHOWN, MONOLITHIC SLAB FOOTING SIMILAR.
- ALWAYS PLACE GARAGE HEADER AT TOP OF ROUGH OPENING.



**TYPICAL GARAGE HEADER/JACK CONNECTION**  
SCALE: 1/2" = 1'-0"



Lou Pontigo and Associates, Inc.

420 Osceola Avenue  
Jax. Beach, Florida 32250  
Ph. 242-0908 Fax. 241-9557  
FL. CA # 8344 SC. CA# 3579



Luis A. Pontigo, PE  
FL PE#53311

REVISIONS	DATE

FIELD ALTERATION

CONTRACTOR SHALL CONTACT LOU PONTIGO & ASSOCIATES PRIOR TO MAKING ANY STRUCTURAL FIELD MODIFICATIONS WHICH MAY VARY FROM THE INTENT OF THE ORIGINAL CONSTRUCTION DOCUMENTS. ANY FIELD ALTERATIONS MADE PRIOR TO BEING APPROVED BY LOU PONTIGO & ASSOCIATES MAY RESULT IN ADDITIONAL ENGINEERING OR INSPECTION FEES.

STARR CUSTOM HOMES  
LOT 167  
PABLO CREEK RESERVE

1ST FLOOR FRAMING PLAN

DO NOT SCALE DIMENSIONS FROM THESE DRAWINGS. IF A DIMENSION IS UNCLEAR REFER TO THE ARCHITECTURAL DRAWINGS OR CONTACT THE E.O.R.

PLAN NAME	SPEC HOME
DESIGN/DRAWN/CHECKED	CS / JB / LAP
DATE	07.13.16
SCALE	AS NOTED
LPA No.	DRBD-16-00465
CONTROL No.	6269
SHEET	S1.11
SHEET	OF 10

SYMBOLS LEGEND

	DESIGNATES SHEARWALL. THE HIDDEN LINE DESIGNATES SIDE OF WALL. THE SHEARWALL SHEATHING TO BE APPLIED @ 3' O.C. EDGE & 6" O.C. "IN THE FIELD."
(2)2x8-1/2	DESIGNATES THE HEADER SIZE, NUMBER OF PLY'S & JACK/KING STUDS.
6S-1/1	DESIGNATES THE SINGLE PLY HEADER AND JACK/KING STUDS NEEDED FOR SUPPORT HEADER. SEE DETAIL 4/SO.0.
---	BEAM OR TRUSS, SEE PLAN.
	DTT2Z w/ 1" THREADED ROD EPOXIED 4".

QUICK-TIE LEGEND

	SHAPE DEFINES NUMBER OF STORES
	LETTER DEFINES DIAMETER OF Q.T. WIRE ROPE
	ONE STORY QUICK TIE
	TWO STORY QUICK TIE
	THREE STORY QUICK TIE
	FOUR STORY QUICK TIE
B	3/8" Q QUICK TIE
G	1/2" Q QUICK TIE
O	5/8" Q QUICK TIE

WALL STUD SCHEDULE

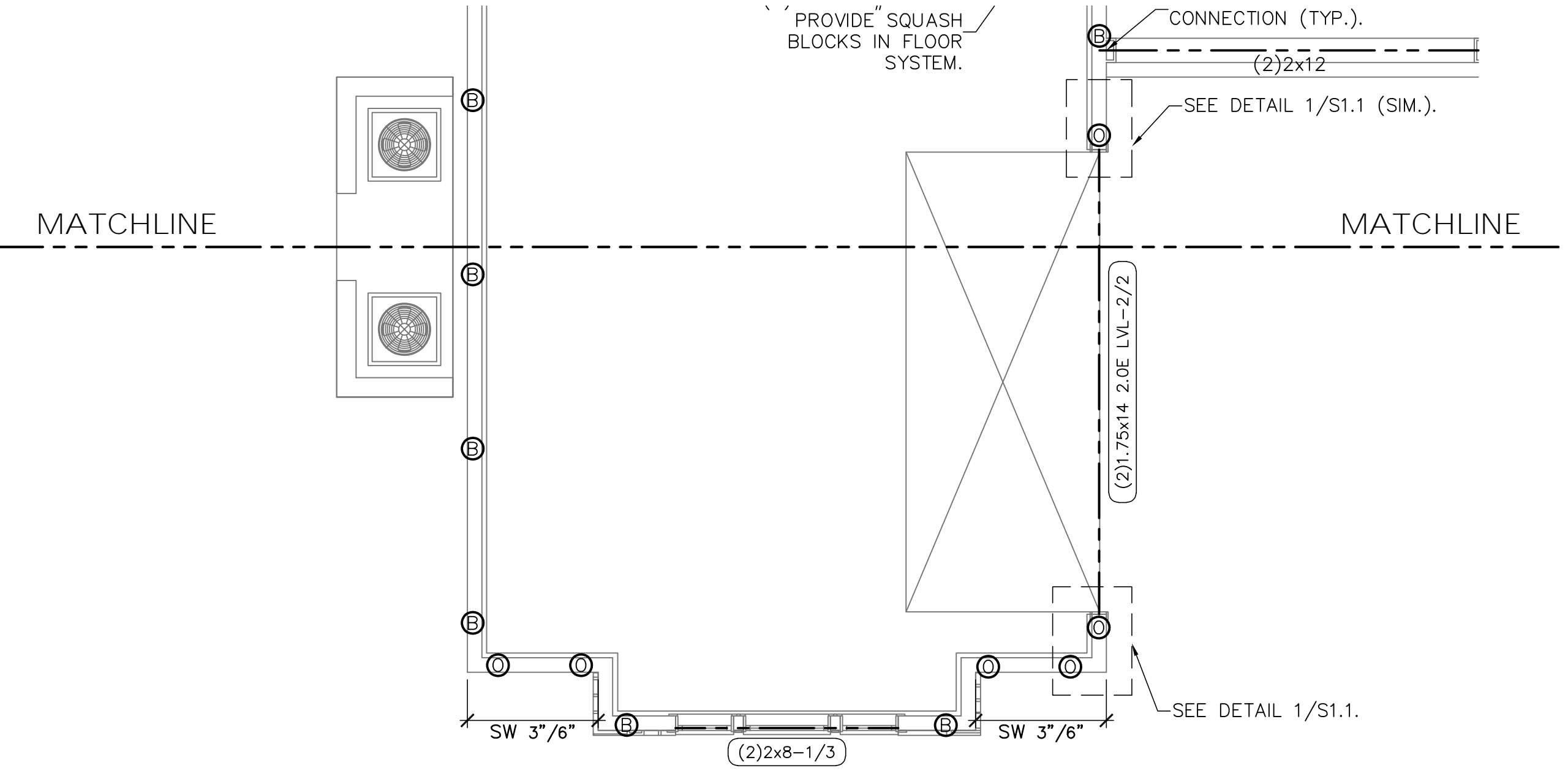
LOCATION	PLATE HEIGHT	STUD SIZE & SPACING
EXTERIOR	9'-1" MAX	2x4 SPF#2 @ 16" O.C.
EXTERIOR	10'-1" MAX	2x6 SPF#2 @ 16" O.C. & 2x4 SPF#2 @ 12" O.C.
EXTERIOR	10'-1" TO 14'-0"	2x6 SPF#2 @ 16" O.C.
INTERIOR	10'-0" MAX	2x4 SPF#2 @ 16" O.C.
INTERIOR	12'-0" MAX	2x6 SPF#2 @ 16" O.C. & 2x4 SPF#2 @ 12" O.C.

STUD NOTES

- 1.) WALL STUDS SPECIFIED ON PLAN SUPERSEDE THIS TABLE
- 2.) MINIMUM STUD SIZE AND SPACING ARE SHOWN. CONTRACTOR MAY INCREASE STUD SIZE TO MEET ARCHITECTURAL REQUIREMENTS.
- 3.) SPF DENOTES SPRUCE PINE FIR. SYP DENOTES SOUTHERN YELLOW PINE.
- 4.) USE SPF#2 FOR ALL TOP PLATES AND SOLE PLATES.
- 5.) FASTEN BOTTOM PLATE OF INTERIOR LOAD BEARING WALLS TO CONCRETE SLAB w/16# MASONRY CMT NAILS @ 16" O.C. MINIMUM. SEE FOUNDATION PLAN FOR ADDITIONAL ANCHORS AT SHEARWALLS.

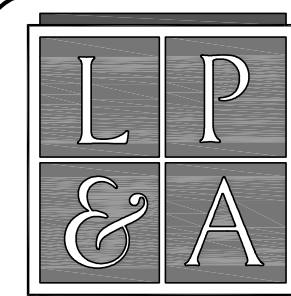
GENERAL NOTES

1. SEE DETAIL 2/SO.0 FOR WALL FRAMING DETAIL. SEE WALL STUD SCHEDULE THIS SHEET FOR STUD SIZES AND SPACING. AT GIRDERS AND BEAMS, PROVIDE STUDS BELOW TO MATCH BEAM/GIRDER PLIES.
2. SEE SHEET SO.0 FOR ROOF AND FLOOR SHEATHING SPECIFICATIONS.
3. WHERE FRAMING MEMBERS CONSIST OF MULTIPLE PLIES (BEAMS, HEADER, AND STUDS) FASTEN PLIES TOGETHER PER DETAIL 6/SO.0.
4. INSTALL SOLE PLATE ANCHORS PER DETAIL 2/SO.0.
6. AT SHEARWALLS, PROVIDE DIAPHRAGM ATTACHMENT PER DETAIL 6 & 7/SO.1.
8. FOR ATTACHMENT OF EXTERIOR WALLS THAT TERMINATE BETWEEN TRUSSES, SEE 6A/SO.1.
9. AT PORCHES, SEE DETAIL 2/SO.1 FOR FRAMING AND HOLD DOWNS.



FIRST LEVEL WALL FRAMING PLAN

SCALE: 1/4" = 1'-0"



Lou Pontigo and Associates, Inc.

420 Osceola Avenue  
Jax. Beach, Florida 32250  
Ph. 242-0908 Fax. 241-9557  
FL. CA # 8344 SC. CA# 3579



Luis A. Pontigo, PE  
FL PE #53311

REVISIONS DATE

REVISIONS	DATE

FIELD ALTERATION

CONTRACTOR SHALL CONTACT LOU PONTIGO & ASSOCIATES PRIOR TO MAKING ANY STRUCTURAL FIELD MODIFICATIONS WHICH MAY VARY FROM THE INTENT OF THE ORIGINAL CONSTRUCTION DOCUMENTS. ANY FIELD ALTERATIONS MADE FROM TO BEING APPROVED BY LOU PONTIGO & ASSOCIATES MAY RESULT IN ADDITIONAL ENGINEERING OR INSPECTION FEES.

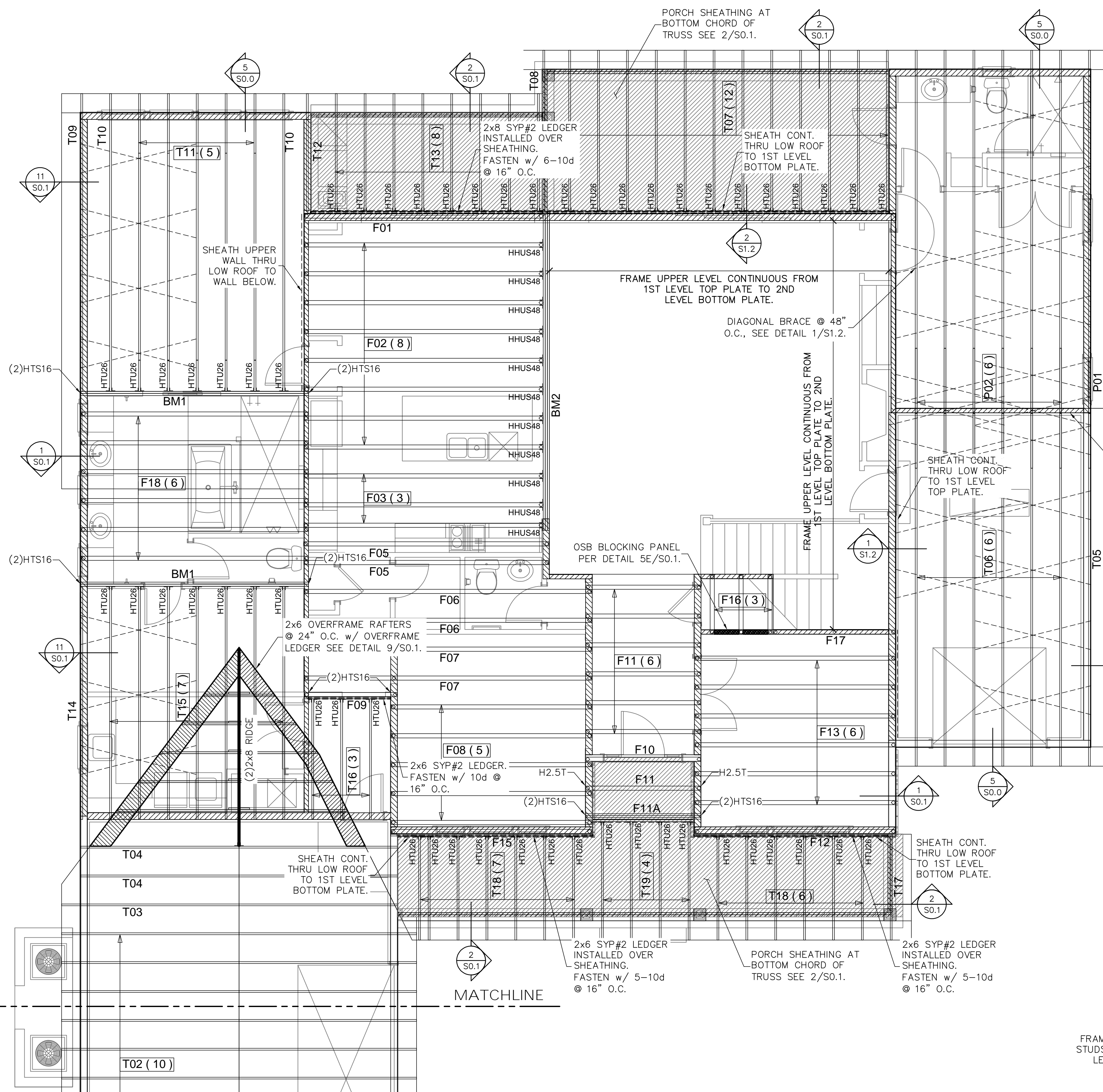
STARR CUSTOM HOMES  
LOT 167  
PABLO CREEK RESERVE

FLOOR AND ROOF TRUSS  
PLACEMENT  
PLAN

DO NOT SCALE DIMENSIONS FROM THESE DRAWINGS. IF A DIMENSION IS UNCLEAR REFER TO THE ARCHITECTURAL DRAWINGS OR CONTACT THE E.O.R.

PLAN NAME	SPEC HOME
DESIGN/DRAWN/CHECKED	CS / JB / LAP
DATE	07.13.16
SCALE	AS NOTED
LPA No.	DRBD-16-00465
CONTROL No.	6269
SHEET	S1.2

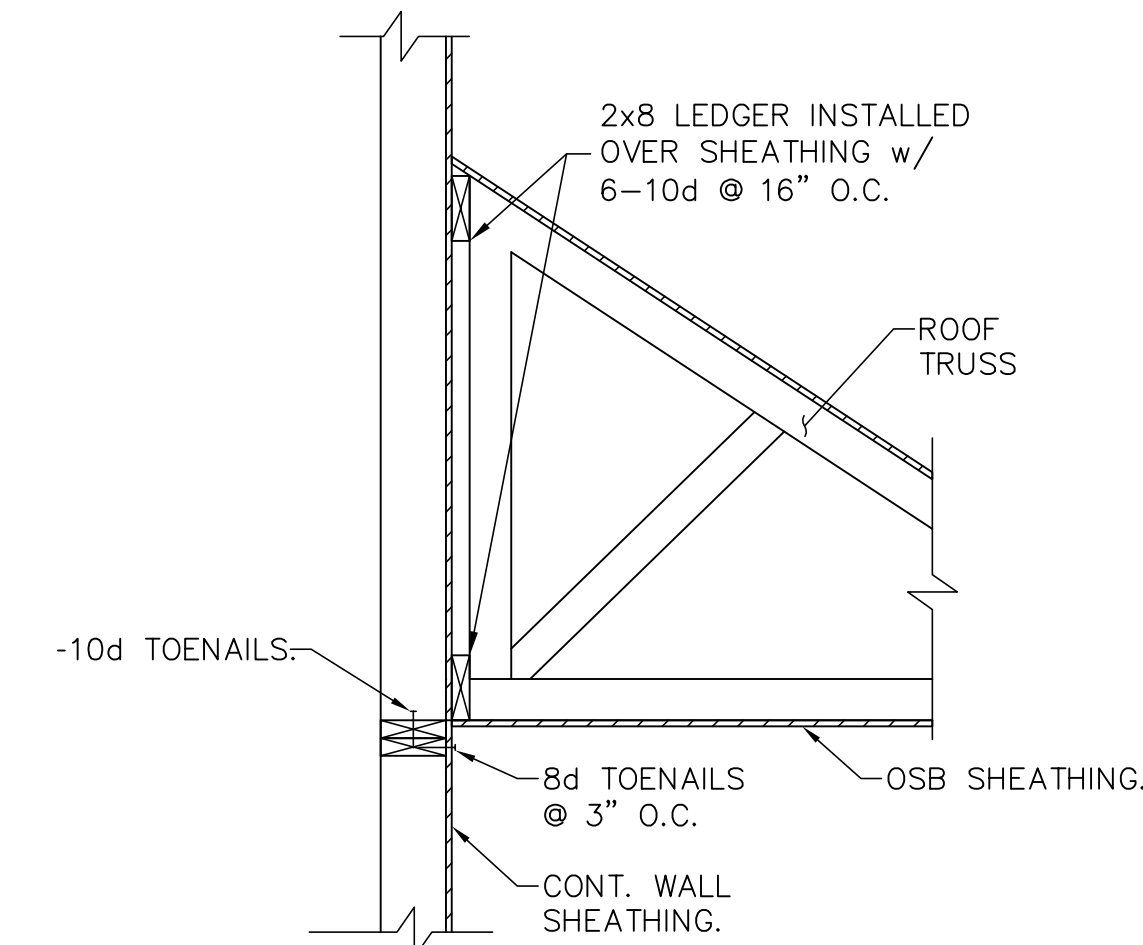
SHEET 7 OF 10



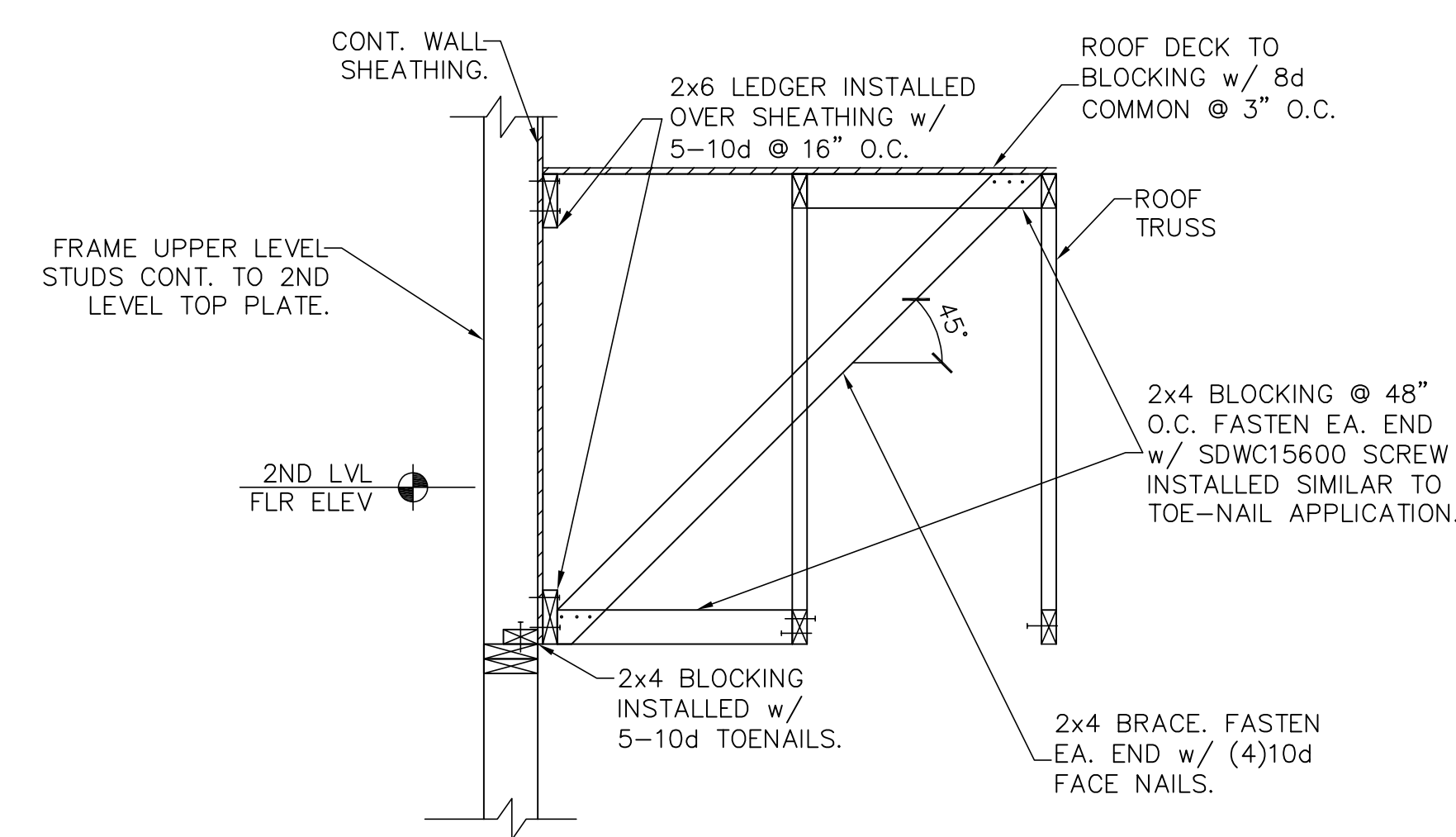
BEAM SCHEDULE				
PlotID	Length	Product	Plies	Net Qty
BM1	16-00-00	1 3/4" x 16" 1.9E Microllam® LVL	2	4
BM2	22-00-00	1 3/4" x 20" 1.9E Microllam® LVL	3	3

TRUSS / ROOF RAFTER NOTES: STRAPPING NOTES

- STRAP TRUSSES AND ROOF RAFTERS TO BEARING WITH 2-12d TOENAILS & 1-QUICK TIE HA4 UPLIFT STRAP OR 1-H2.5T UNLESS OTHERWISE NOTED

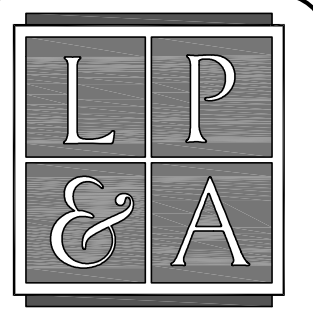


SECTION 2



SECTION 1

FLOOR AND ROOF TRUSS PLACEMENT PLAN  
SCALE: 1/4" = 1'-0"



Lou Pontigo and Associates, Inc.  
 420 Osceola Avenue  
 Jax. Beach, Florida 32250  
 Ph. 242-0908 Fax. 241-9557  
 FL. CA # 8344 SC. CA# 3579



Luis A. Pontigo, PE  
 FL PE#53311

REVISIONS	DATE

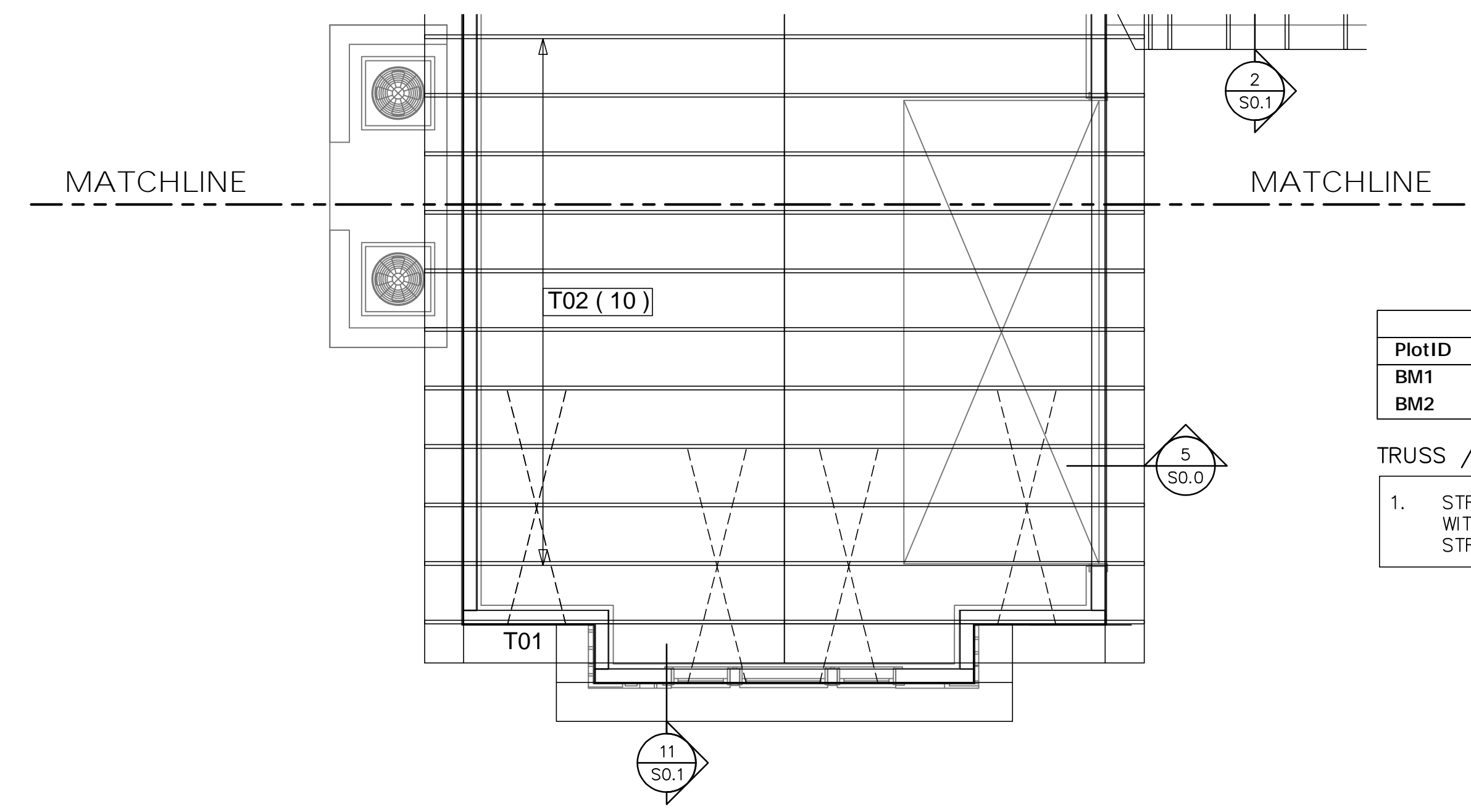
**FIELD ALTERATION**  
 CONTRACTOR SHALL CONTACT LOU PONTIGO & ASSOCIATES PRIOR TO MAKING ANY STRUCTURAL FIELD MODIFICATIONS WHICH MAY VARY FROM THE INTENT OF THE ORIGINAL CONSTRUCTION DOCUMENTS. ANY FIELD ALTERATIONS MADE PRIOR TO BEING APPROVED BY LOU PONTIGO & ASSOCIATES MAY RESULT IN ADDITIONAL ENGINEERING OR INSPECTION FEES.

STARR CUSTOM HOMES  
 LOT 167  
 PABLO CREEK RESERVE

**GARAGE ROOF TRUSS  
 PLACEMENT PLAN**

DO NOT SCALE DIMENSIONS FROM THESE DRAWINGS. IF A DIMENSION IS UNCLEAR REFER TO THE ARCHITECTURAL DRAWINGS OR CONTACT THE E.O.R.

PLAN NAME	SPEC HOME
DESIGN/DRAWN/CHECKED	CS / JB / LAP
DATE	07.13.16
SCALE	AS NOTED
LPA No.	DRBD-16-00465
CONTROL No.	6269
SHEET	S1.21
	SHEET 8 OF 10



BEAM SCHEDULE				
PlotID	Length	Product	Plies	Net Qty
BM1	16-00-00	1 3/4" x 16" 1.9E Microllam® LVL	2	4
BM2	22-00-00	1 3/4" x 20" 1.9E Microllam® LVL	3	3

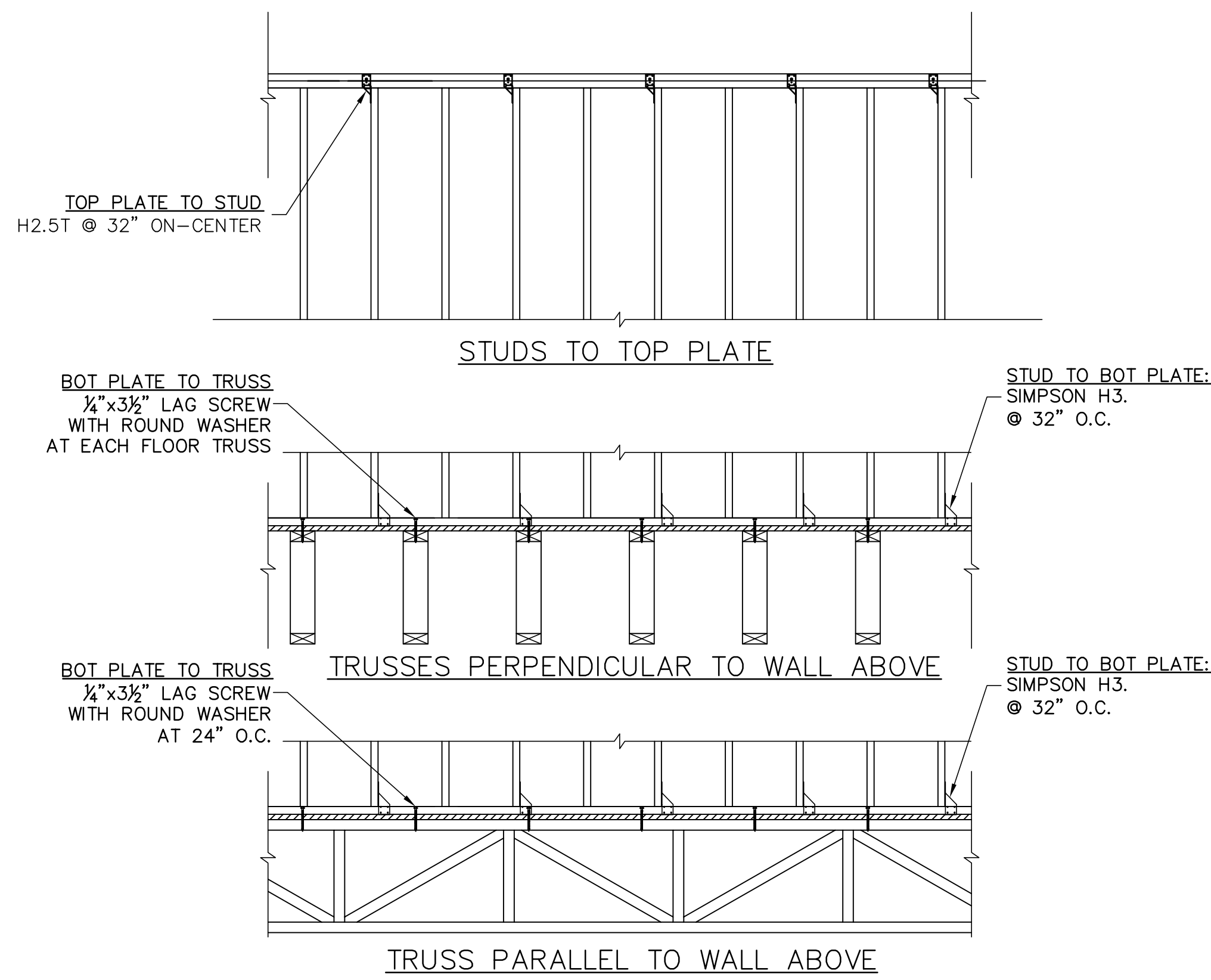
TRUSS / ROOF RAFTER NOTES: STRAPPING NOTES

- STRAP TRUSSES AND ROOF RAFTERS TO BEARING WITH 2-12d TOENAILS & 1-QUICK TIE HA4 UPLIFT STRAP OR 1-H2.5T UNLESS OTHERWISE NOTED

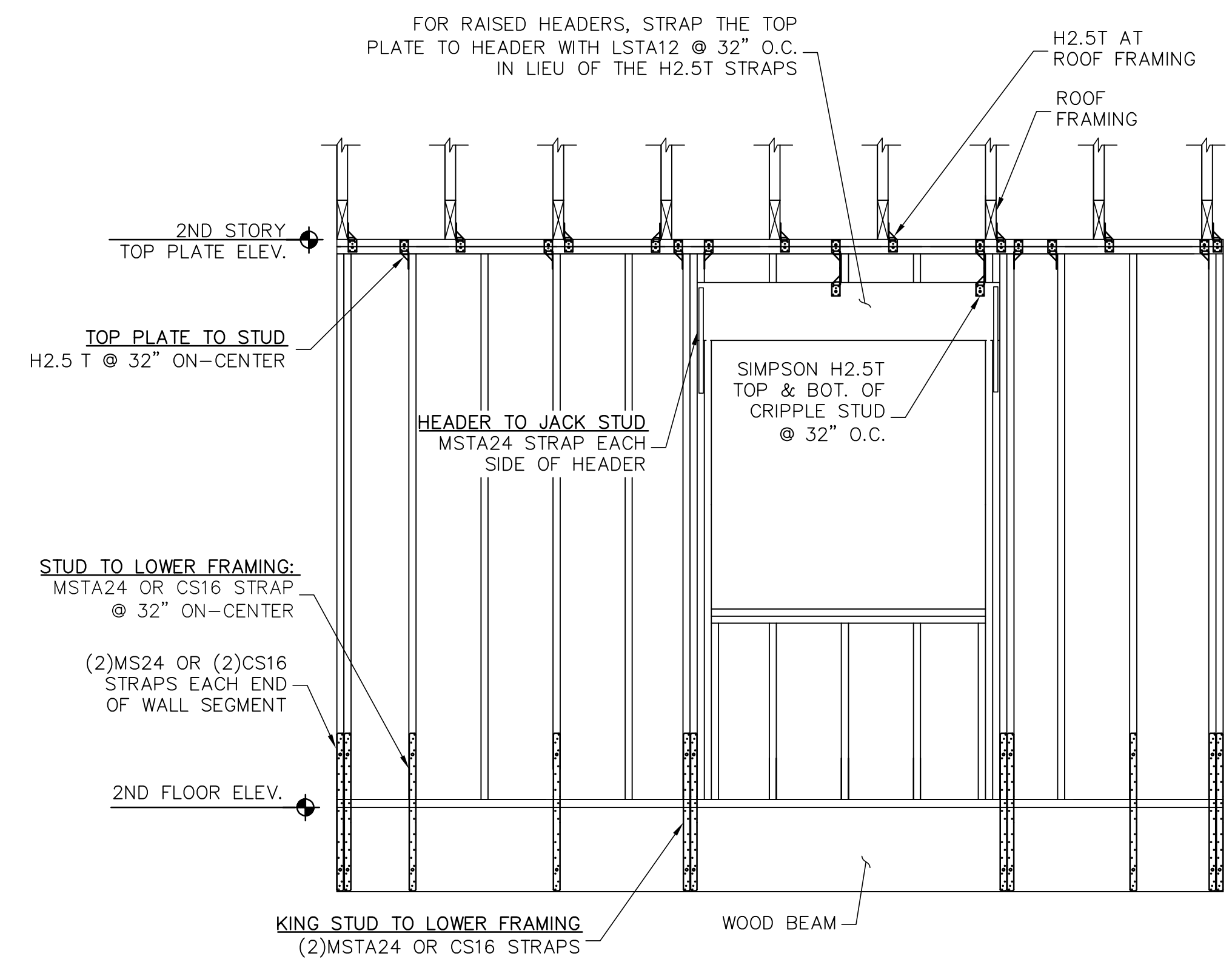
**GARAGE ROOF TRUSS PLACEMENT PLAN**

SCALE: 1/4" = 1'-0"

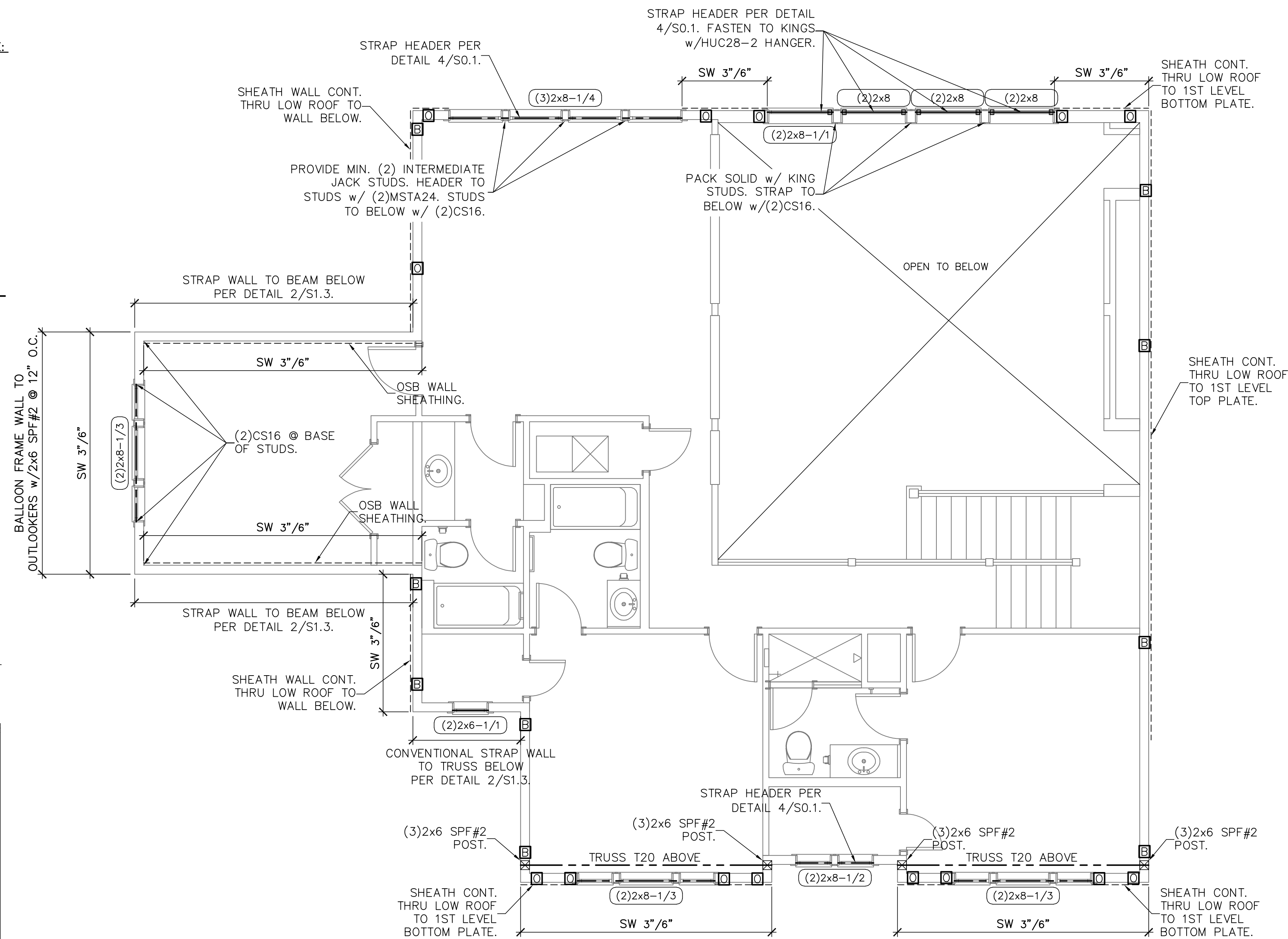




1 WALL STRAPPING DETAIL  
S1.3 THIS DETAIL ONLY APPLIES WHEN NOTED ON PLAN



2 CONVENTIONAL STRAPPING TO BEAM BELOW  
S1.3 SCALE: 3/4\"/>



SECOND LEVEL WALL FRAMING PLAN  
SCALE: 1/4\"/>

SYMBOLS LEGEND		
	DESIGNATES SHEARWALL. THE HIDDEN LINE DESIGNATES SIDE OF WALL. THE SHEARWALL SHEATHING TO BE APPLIED BY @ 2\"/>	
	DESIGNATES THE HEADER SIZE, NUMBER OF PLY'S & JACK/KING STUDS.	
	DESIGNATES THE SINGLE PLY HEADER AND JACK/KING STUDS NEEDED FOR SUPPORT HEADER. SEE DETAIL 4/SO.0.	
	BEAM OR TRUSS. SEE PLAN.	
	DTT2Z w/ 1\"/>	

QUICK-TIE LEGEND		
	SHAPE DEFINES NUMBER OF STORES	
	LETTER DEFINES DIAMETER OF Q.T. WIRE ROPE	
	ONE STORY QUICK TIE	
	TWO STORY QUICK TIE	
	THREE STORY QUICK TIE	
	FOUR STORY QUICK TIE	
	LETTER: B 3/8\"/>	
	G 1/2\"/>	
	O 5/8\"/>	

WALL STUD SCHEDULE		
LOCATION	PLATE HEIGHT	STUD SIZE & SPACING
EXTERIOR	9'-1\"/>	2x4 SPF#2 @ 16\"/>
EXTERIOR	10'-1\"/>	2x6 SPF#2 @ 16\"/>
EXTERIOR	10'-1\"/>	2x4 SPF#2 @ 12\"/>
INTERIOR	10'-1\"/>	2x6 SPF#2 @ 16\"/>
INTERIOR	10'-0\"/>	2x4 SPF#2 @ 16\"/>
INTERIOR	12'-0\"/>	2x6 SPF#2 @ 16\"/>
INTERIOR	12'-0\"/>	2x4 SPF#2 @ 12\"/>

- FIELD ALTERATION
- 1.) WALL STUDS SPECIFIED ON PLAN SUPERSEDE THIS TABLE
  - 2.) MINIMUM STUD SIZE AND SPACING ARE SHOWN. CONTRACTOR MAY INCREASE STUD SIZE TO MEET ARCHITECTURAL REQUIREMENTS.
  - 3.) SPF DENOTES SPRUCE PINE FIR. SYP DENOTES SOUTHERN YELLOW PINE.
  - 4.) USE SPF#2 FOR ALL TOP PLATES AND SOLE PLATES.
  - 5.) FASTEN BOTTOM PLATE OF INTERIOR LOAD BEARING WALLS TO CONCRETE SLAB w/16# MASONRY CUT NAILS @ 16\"/>

- GENERAL NOTES
1. SEE DETAIL 2/SO.0 FOR WALL FRAMING DETAIL. SEE WALL STUD SCHEDULE THIS SHEET FOR STUD SIZES AND SPACING. AT GIRDERS AND BEAMS, PROVIDE STUDS BELOW TO MATCH BEAM/GIRDER PLYS.
  2. SEE SHEET SO.0 FOR ROOF AND FLOOR SHEATHING SPECIFICATIONS.
  3. WHERE FRAMING MEMBERS CONSIST OF MULTIPLE PLYS (BEAMS, HEADER, AND STUDS) FASTEN PLYS TOGETHER PER DETAIL 6/SO.0
  4. INSTALL SOLE PLATE ANCHORS PER DETAIL 2/SO.0
  6. AT SHEARWALLS, PROVIDE DIAPHRAGM ATTACHMENT PER DETAIL 6 & 7/SO.1
  8. FOR ATTACHMENT OF EXTERIOR WALLS THAT TERMINATE BETWEEN TRUSSES, SEE 6A/SO.1
  9. AT PORCHES, SEE DETAIL 2/SO.1 FOR FRAMING AND HOLD DOWNS

Lou Pontigo and Associates, Inc.  
420 Osceola Avenue  
Jax. Beach Florida 32250  
Ph. 242-0908 Fax. 241-9557  
FL. CA # 8344 SC. CA# 3579

Luis A. Pontigo, PE  
FL PE#53311

REVISIONS	DATE

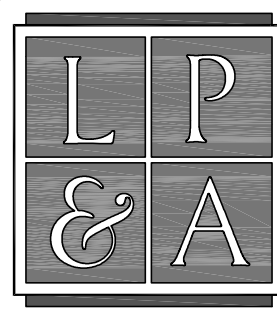
CONTRACTOR SHALL CONTACT LOU PONTIGO & ASSOCIATES PRIOR TO MAKING ANY STRUCTURAL FIELD MODIFICATIONS WHICH MAY VARY FROM THE INTENT OF THE ORIGINAL CONSTRUCTION DOCUMENTS. ANY FIELD ALTERATIONS MADE PRIOR TO BEING APPROVED BY LOU PONTIGO & ASSOCIATES MAY RESULT IN ADDITIONAL ENGINEERING OR INSPECTION FEES.

STARR CUSTOM HOMES  
LOT 167  
PABLO CREEK RESERVE

2nd FLOOR  
FRAMING  
PLAN

DO NOT SCALE DIMENSIONS FROM THESE DRAWINGS. IF A DIMENSION IS UNCLEAR REFER TO THE ARCHITECTURAL DRAWINGS OR CONTACT THE E.O.R.

PLAN NAME	SPEC HOME
DESIGN/DRAWN/CHECKED	CS / JB / LAP
DATE	07.13.16
SCALE	AS NOTED
LPA No.	DRB0-16-00465
CONTROL No.	6269
SHEET	S1.3
SHEET	9 OF 10



Lou Pontigo and Associates, Inc.

420 Osceola Avenue  
Jax. Beach, Florida 32250  
Ph. 242-0908 Fax. 241-9557  
FL. CA # 8344 SC. CA# 3579



Luis A. Pontigo, PE  
FL PE#53311

REVISIONS	DATE

**FIELD ALTERATION**

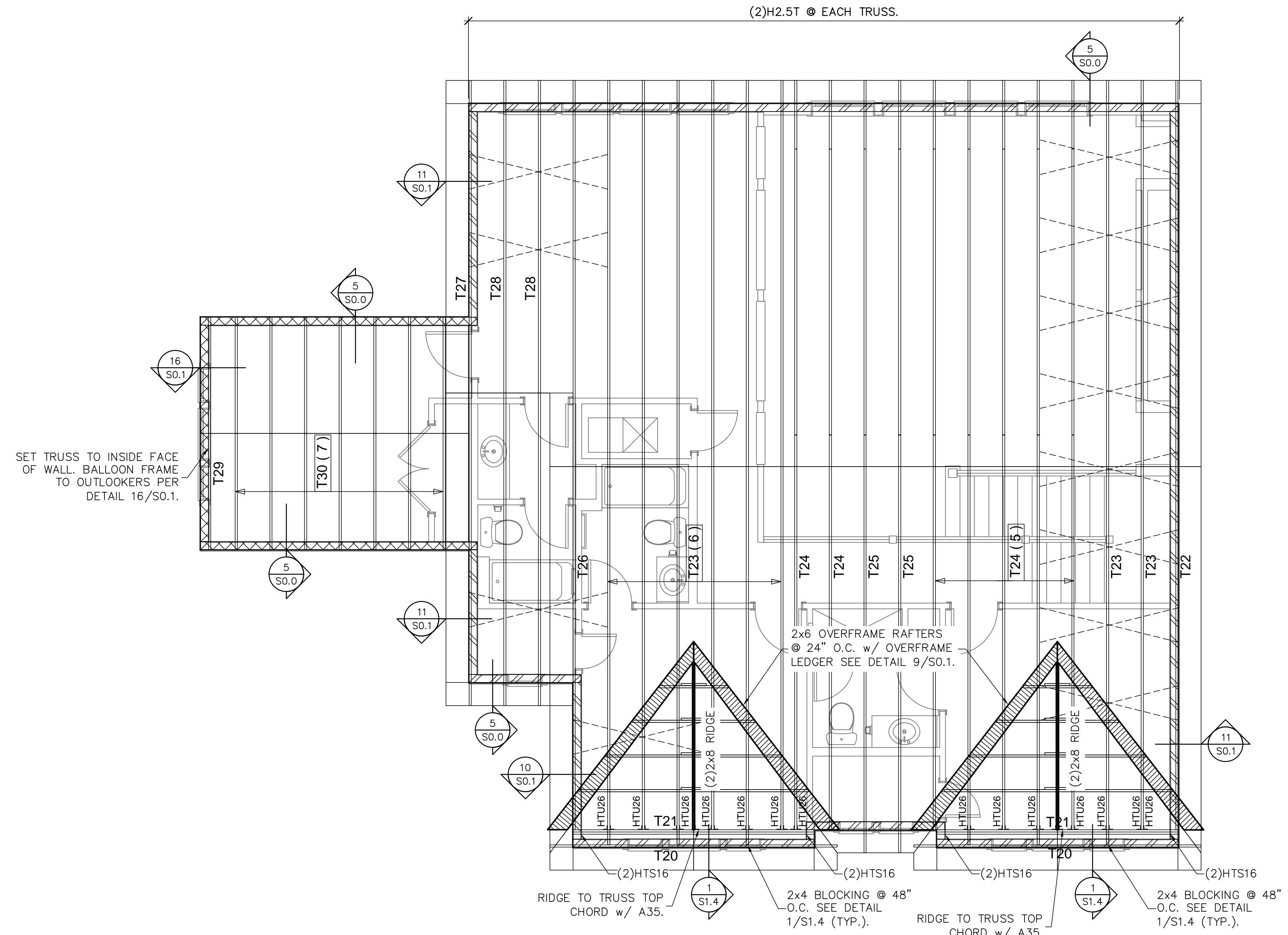
CONTRACTOR SHALL CONTACT LOU PONTIGO & ASSOCIATES PRIOR TO MAKING ANY STRUCTURAL FIELD MODIFICATIONS WHICH MAY VARY FROM THE INTENT OF THE ORIGINAL CONSTRUCTION DOCUMENTS. ANY FIELD ALTERATIONS MADE PRIOR TO BEING APPROVED BY LOU PONTIGO & ASSOCIATES MAY RESULT IN ADDITIONAL ENGINEERING OR INSPECTION FEES.

STARR CUSTOM HOMES  
LOT 167  
PABLO CREEK RESERVE

**TRUSS  
PLACEMENT  
PLAN**

DO NOT SCALE DIMENSIONS FROM THESE DRAWINGS. IF A DIMENSION IS UNCLEAR REFER TO THE ARCHITECTURAL DRAWINGS OR CONTACT THE E.O.R.

PLAN NAME	SPEC HOME
DESIGN/DRAWN/CHECKED	CS / JB / LAP
DATE	07.13.16
SCALE	AS NOTED
LPA No.	DRBD-16-00465
CONTROL No.	6269
SHEET	S1.4
SHEET 10 OF 10	

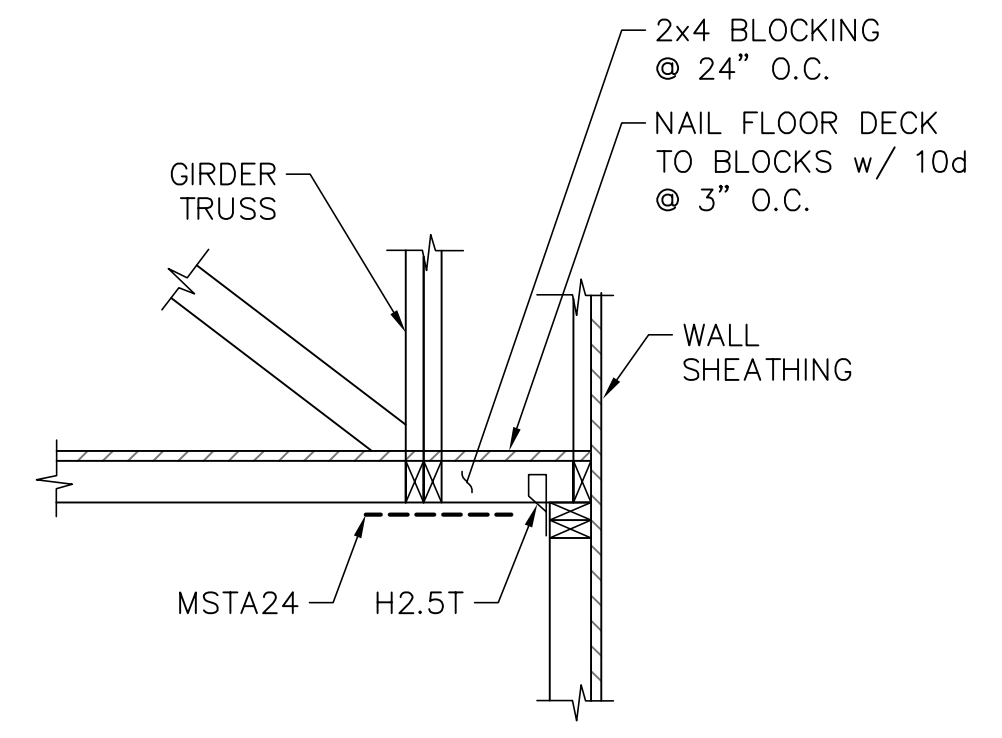


**ROOF TRUSS PLACEMENT PLAN**

SCALE: 1/4" = 1'-0"

**TRUSS / ROOF RAFTER NOTES: STRAPPING NOTES**

- STRAP TRUSSES AND ROOF RAFTERS TO BEARING WITH 2-12d TOENAILS & 1-QUICK TIE HA4 UPLIFT STRAP OR 1-H2.5T UNLESS OTHERWISE NOTED



1 GABLE BLOCKING DETAIL  
S1.4